



Cisco Tidal Enterprise Scheduler – part #3

TES Engineering 7.13.2012

Rev 2.0



Agenda

Agenda

- Engineering Sessions
 - Deliver a series of engineering sessions
 - Technical/architectural changes with TES6
<https://cisco.webex.com/ciscosales/lsr.php?AT=pb&SP=MC&rID=61839917&rKey=3ede6dbb6ecfead2>
 - Upgrade process – primary focus at high level, not step by step
 - Performance optimization for TES 6
<https://cisco.webex.com/ciscosales/lsr.php?AT=pb&SP=MC&rID=61931757&rKey=000ac3c0da12377f>
 - Brief re-cap of TES 5/6 architectural delta
 - Topics
 - Feature function: Security Policy Granularity in TES 6
 - Feature function: Using the new TES REST API
 - Master performance: Using Jconsole to inspect the master
 - Aim for an interactive session – Chat questions to the moderator and panelist will review and elaborate as appropriate.
 - Dedicate 50% of the time for Q/A

TES 6.x Release Schedule

Cisco TES Releases

(*Subject to Change)



Self-Service
Big Data / Hadoop
Cloud Agents/Storage
Mobile Client

*6.1

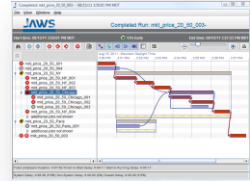


6.0.3

REST Adapter
Job-Based Timezones
Resource Constraints

JAWS
for
Cisco®
TES

Predictive Analytics
Historical Analytics



6.0.2

JDBC
VMware
JDE

6.0.1

BO
PSFT
COGNOS
Informatica

6.0

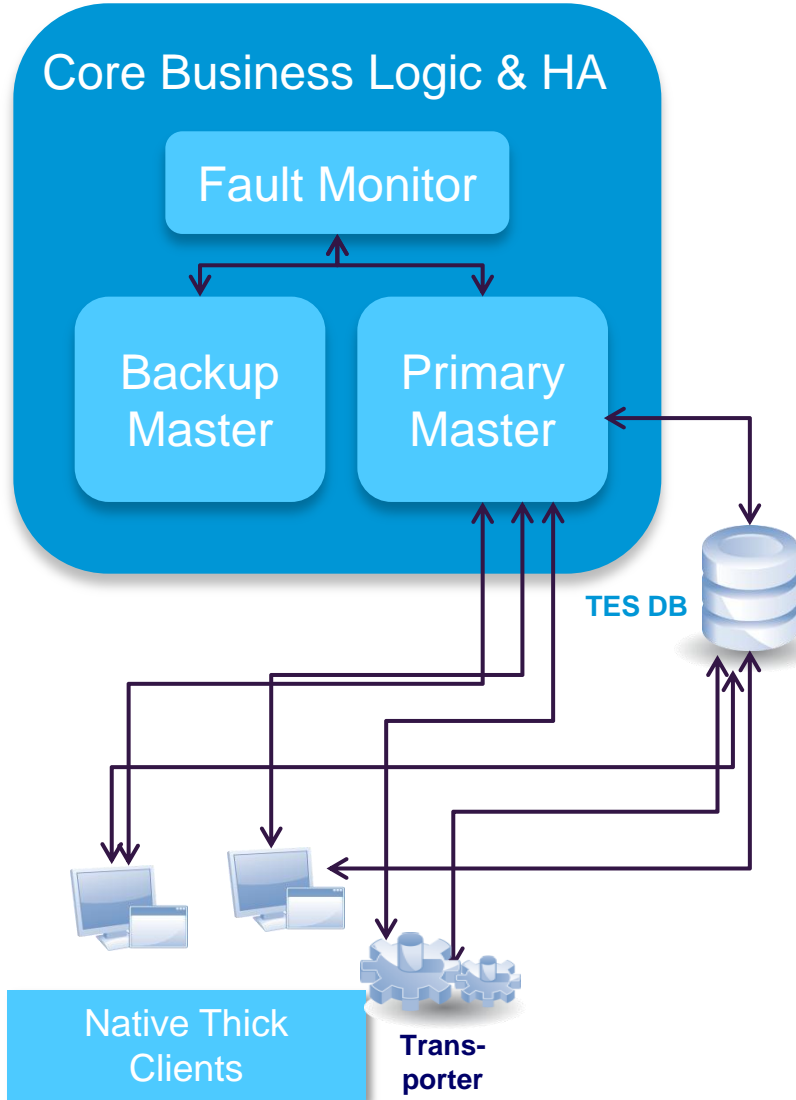
Web based client
SOAP/REST API, Agentless Scheduling, JMS,
FTP, SFTP, SAP, EBSO, Oracle DB, MS SQL, etc.

Note: Bridge-based adapters supported

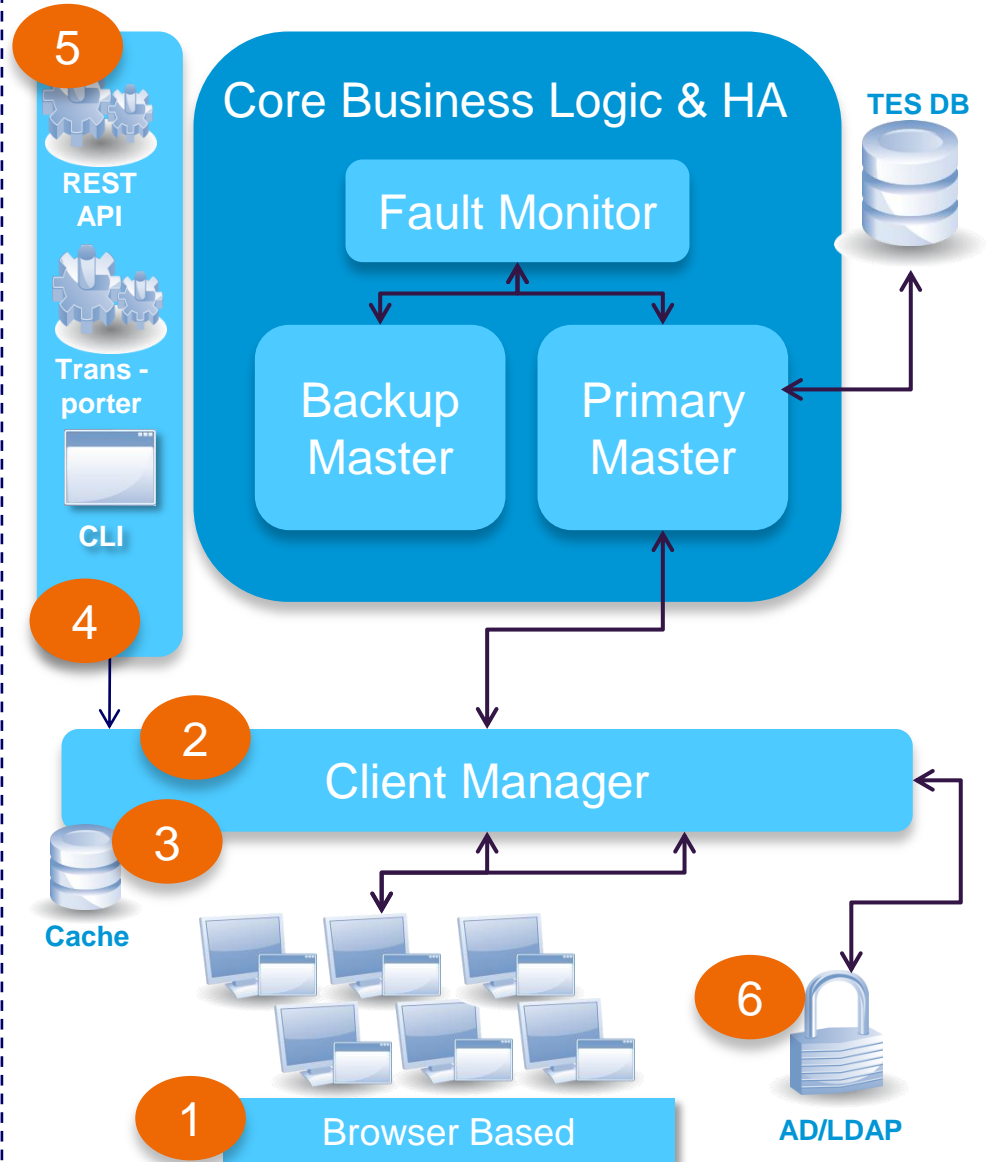


Mini Recap on TES 6 architectural delta

TES 5.3.1



TES 6

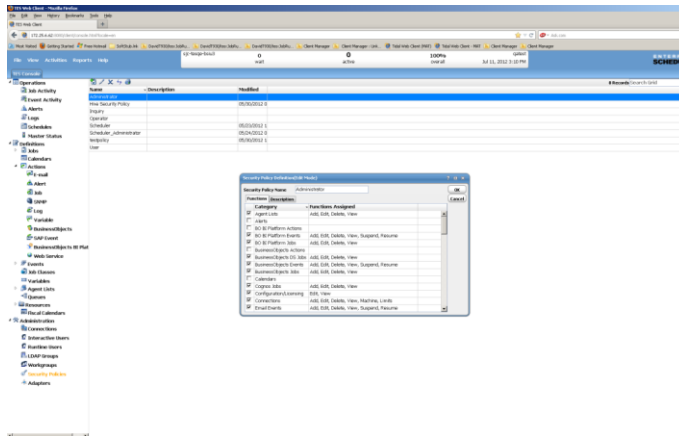




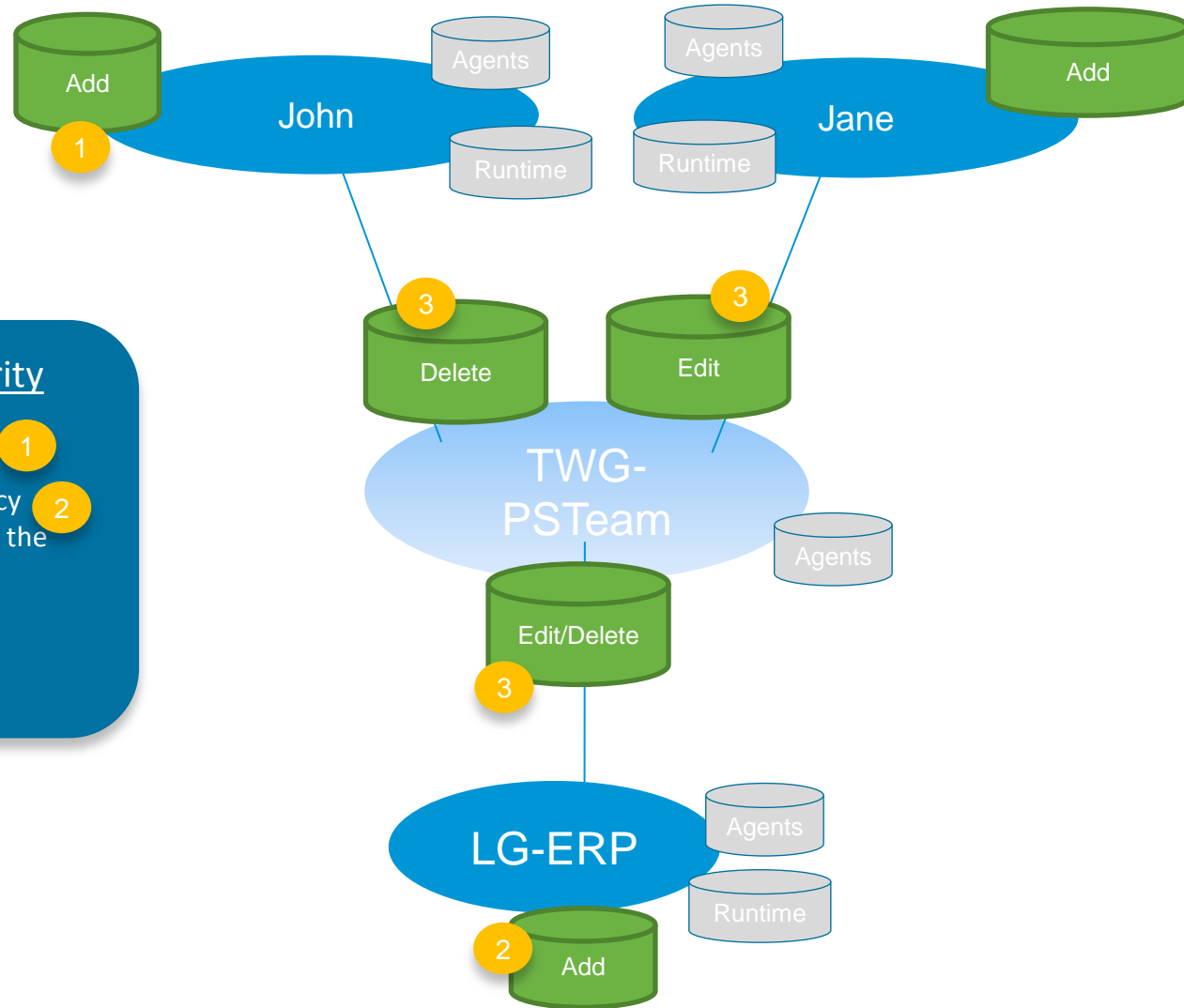
New feature/function

TES6 offers more granular control options

- Last week we discuss how run time users are derived during job definition
- This week we will talk about how you can get more granular on user rights via the use of TES security policies



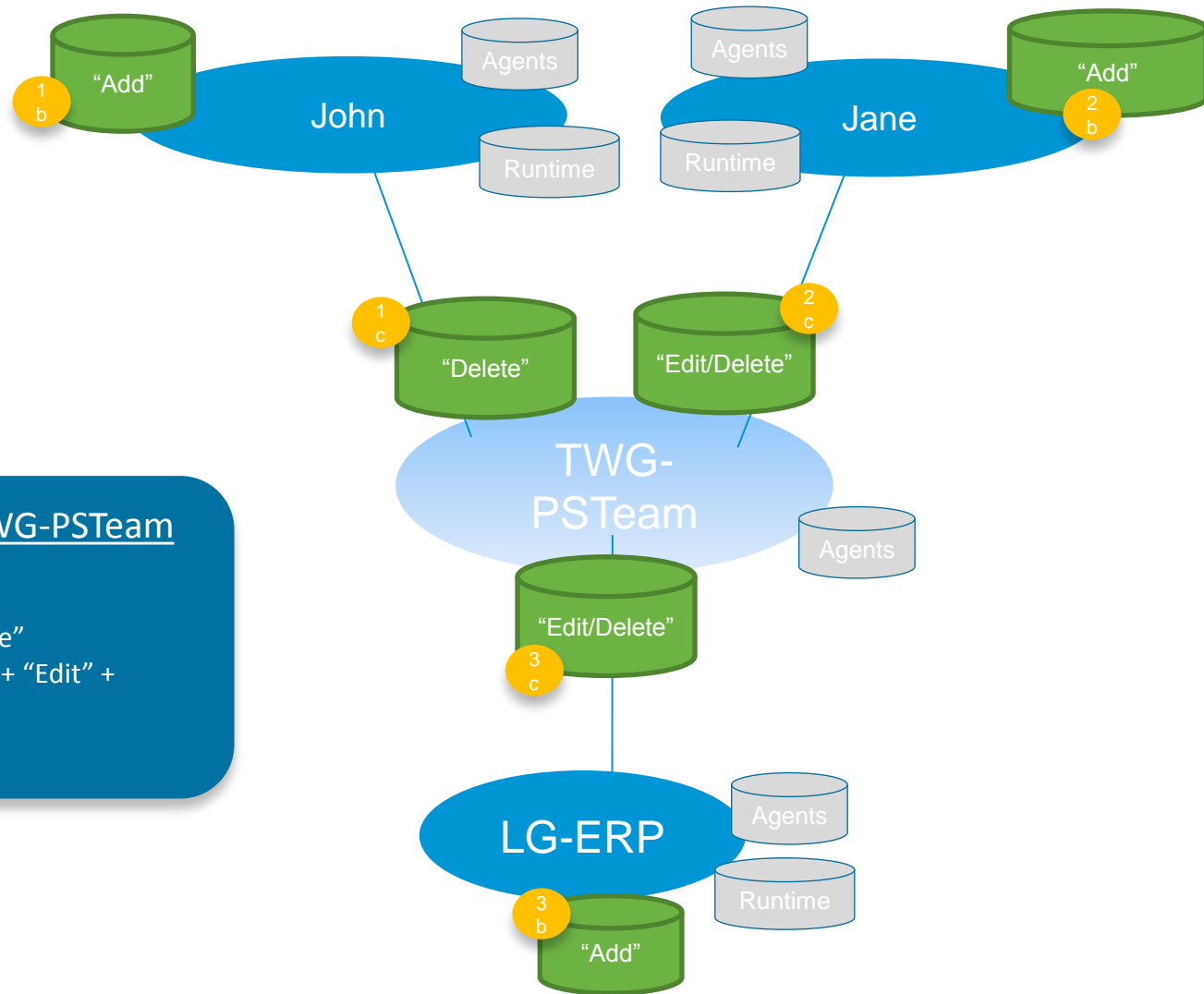
TES 6 – Security Policy Assignments



TES 6 offers more granularity

- TES users can have a security policy 1
- LDAP groups can have a security policy 2
- TES 6 allows you to expand/augment the rights as the user is joined to a TES workgroup 3

TES 6 – Example #1



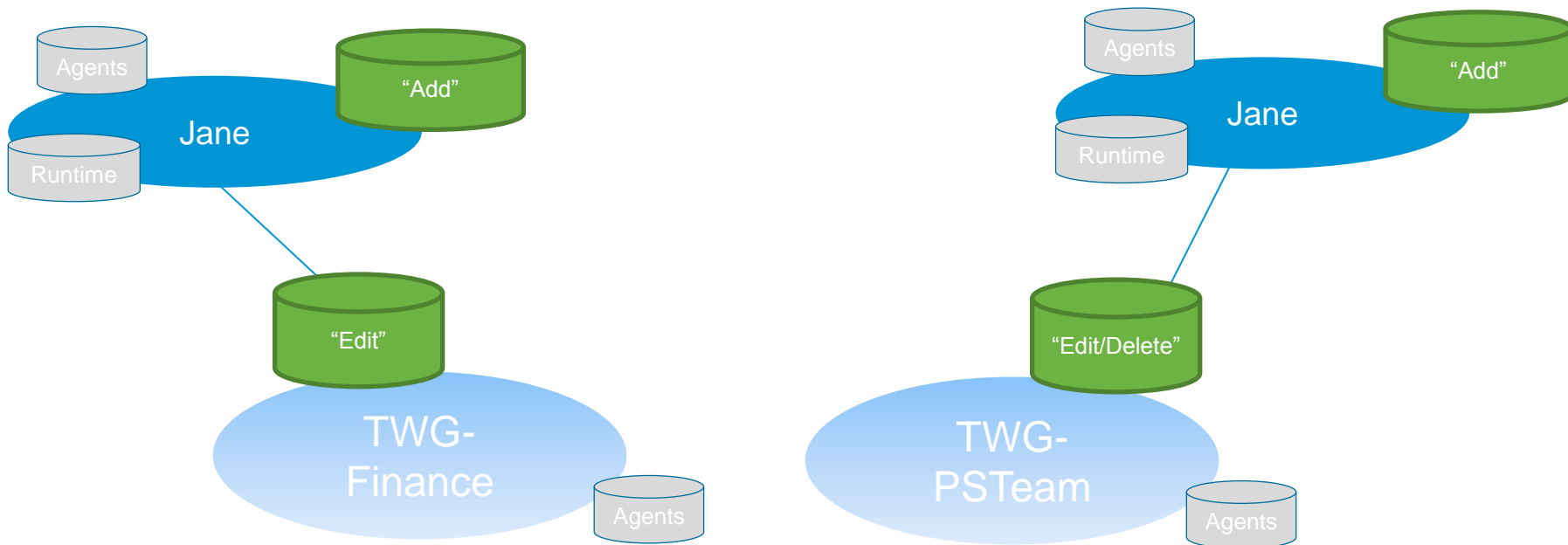
For objects owned by TWG-PSTeam

- 1 a • John has "Add" + "Delete"
- 2 a • Jane has "Add" + "Edit" + "Delete"
- 3 a • Members of LG-ERP have "Add" + "Edit" + "Delete"

TES 6 – Example #2

Users can have memberships with different security policy assignments

- For objects owned by TWG-Finance, Jane has “Add” + “Edit”
- For objects owned by TWG-PSTeam, Jane has “Add” + “Edit” + “Delete”

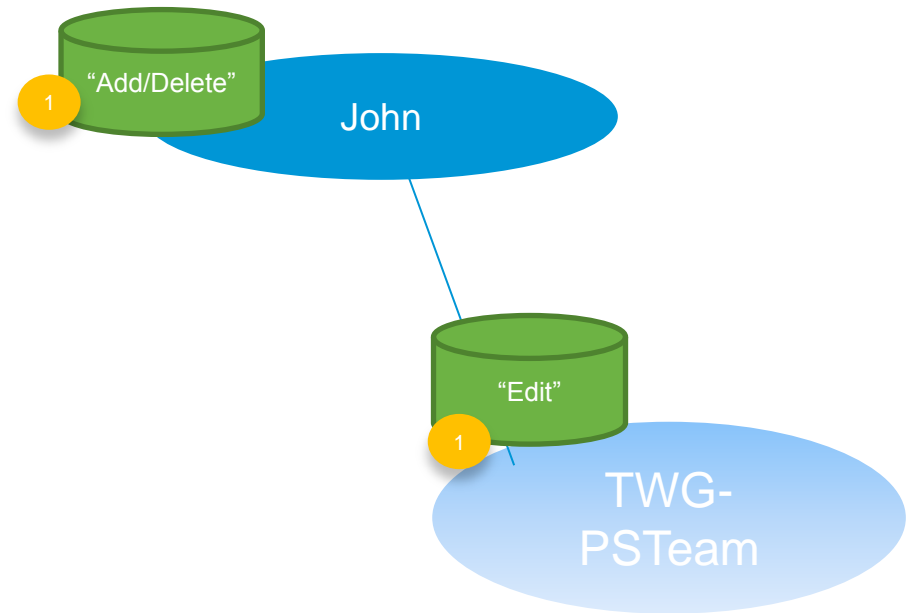


TES 6 – Example #3

What happens if the user has “more” rights as an individual user???

For objects owned by TWG-PSTeam

- John has “add” + “delete” + “edit”



TES 6 – Final point

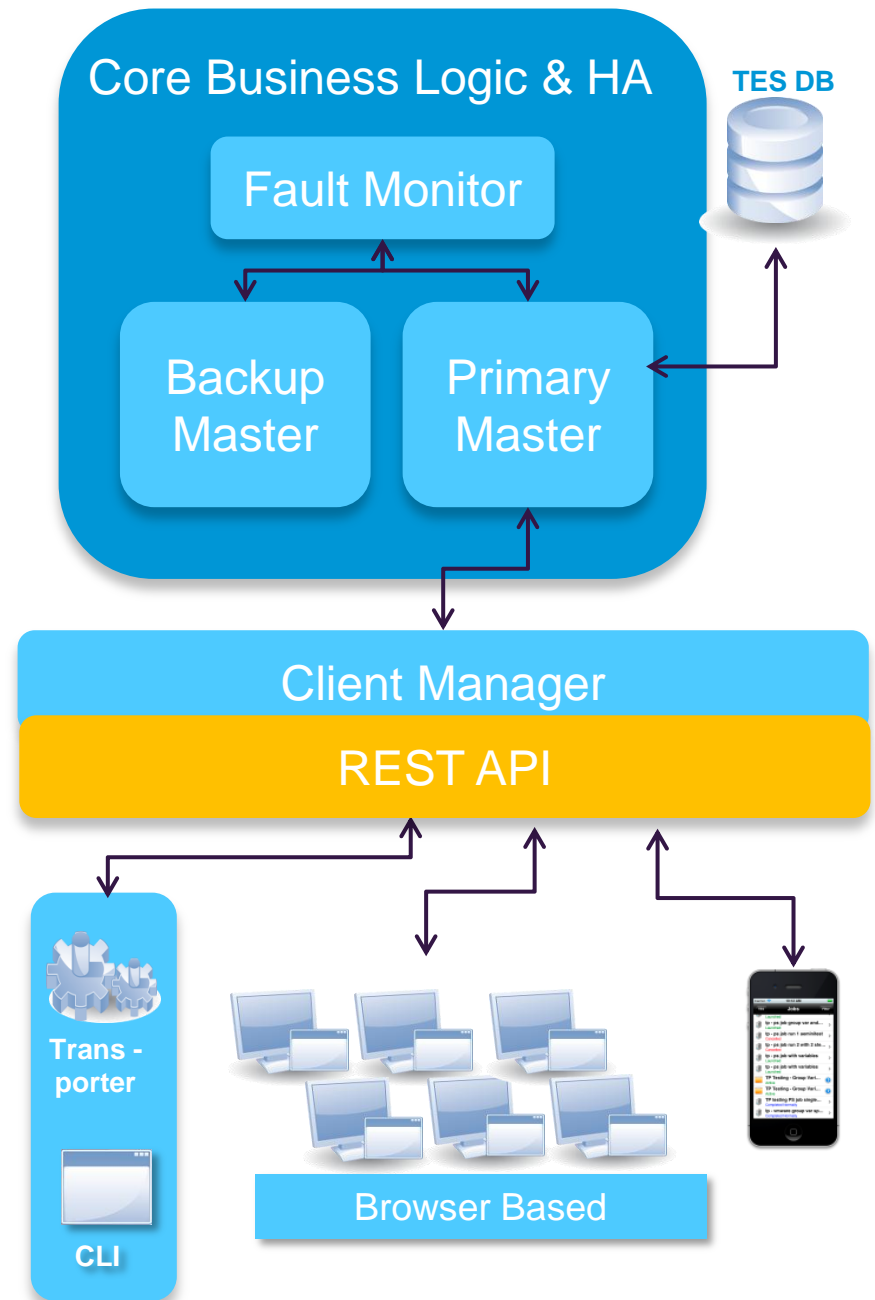
- Points to keep in mind:
 - A user rights are “augmented/extended” when a security policy is assigned when they become members of workgroups
 - A user doesn’t lose their assigned rights



Using the new TES 6 REST API

REST API

- TES API is used extensively by TES components, such as the Web Client, CLI, Transporter and the future mobile client.



Lets see a demo of how to use the API

Using Jconsole to monitor the TES master

Lets see a demo of how to use JConsole

