

A person wearing a blue long-sleeved shirt is pointing at a large screen that displays a complex network diagram. The diagram consists of various nodes and connecting lines, representing a network topology. The person's hand is in the foreground, pointing towards the screen. The background is slightly blurred, showing what appears to be a window or a bright light source.

IWAN Application for the APIC-EM Controller

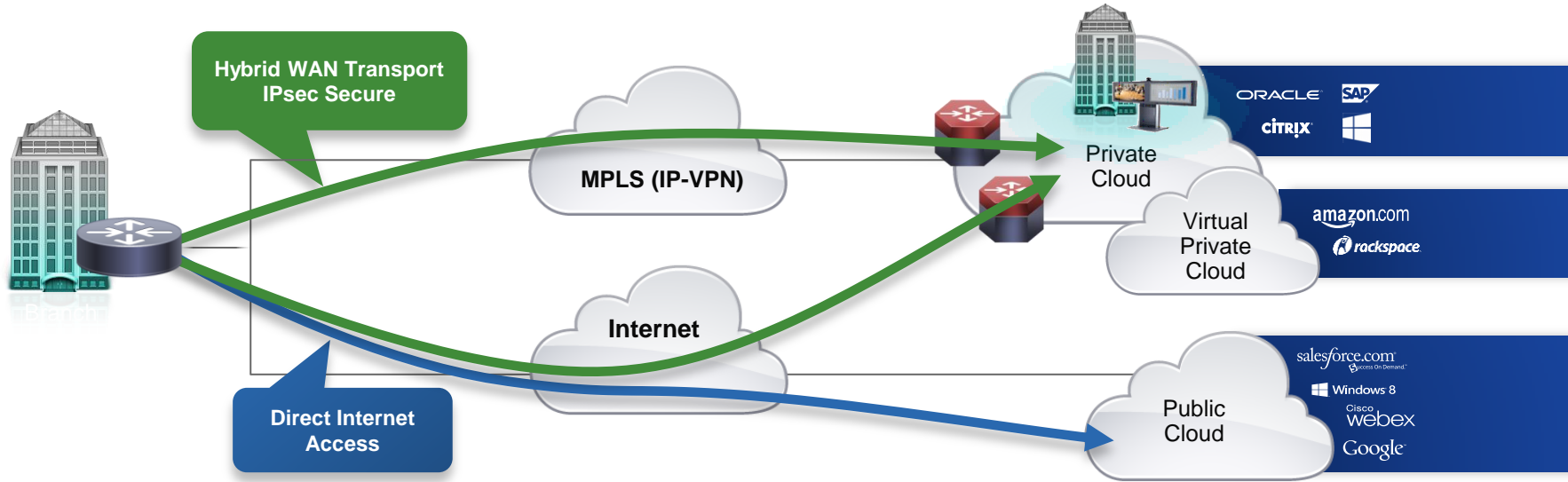
Pedro Leonardo – Product Management Network Transformation
September 2015

Agenda

1. Intelligent WAN recap
2. Deploying IWAN using Plug and Play
3. Demo:
 - Visualization of branches and their status from a easy-to-manage GUI
 - Define path control and priorities for application per business needs

Intelligent WAN: Leveraging the Internet

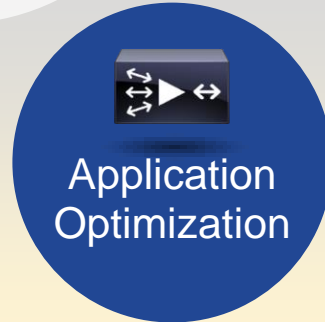
Secure WAN Transport and Internet Access



- Secure **WAN transport** for private and virtual private cloud access
- Leverage **local Internet** path for public cloud and Internet access

- Increased WAN transport capacity; and cost effectively!
- Improve application performance (right flows to right places)

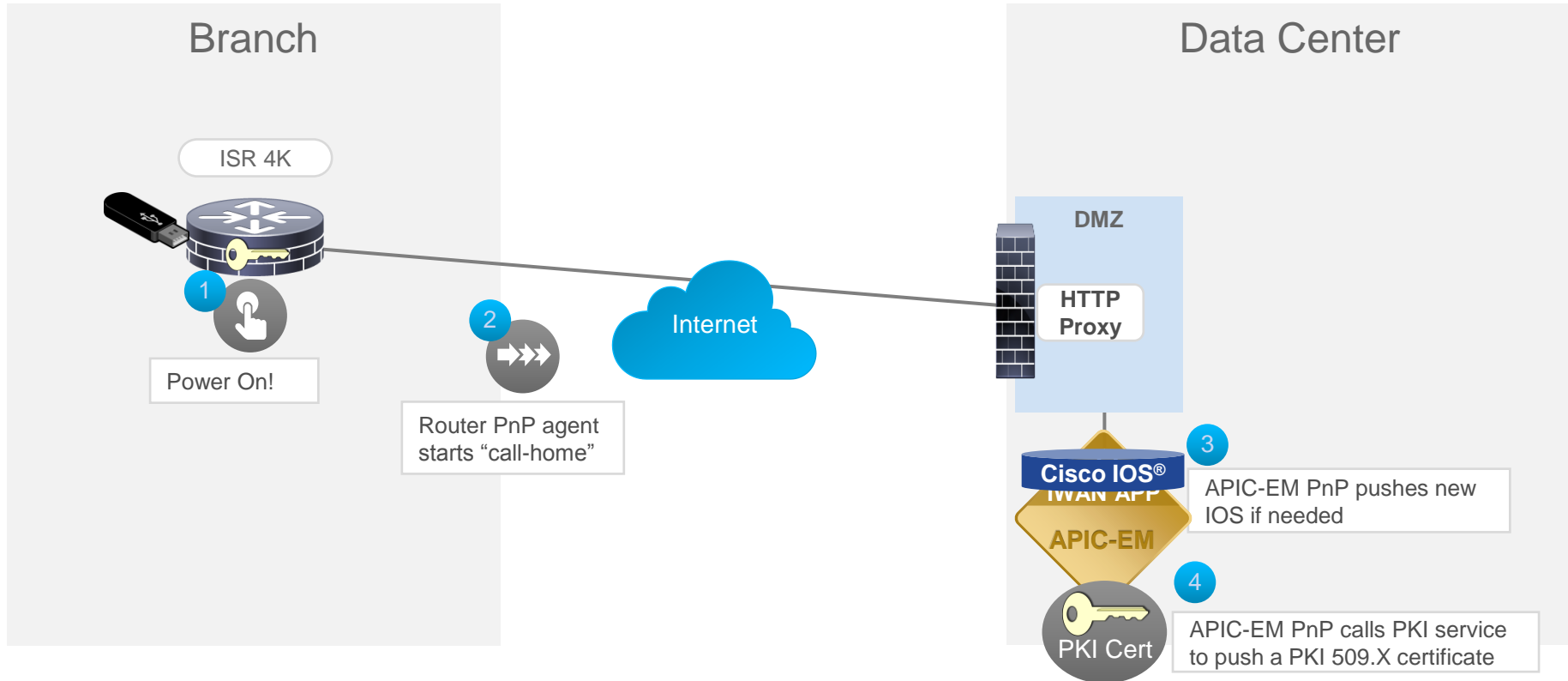
SD-WAN Done Right – Cisco Intelligent WAN



Deploying IWAN sites with Plug and Play

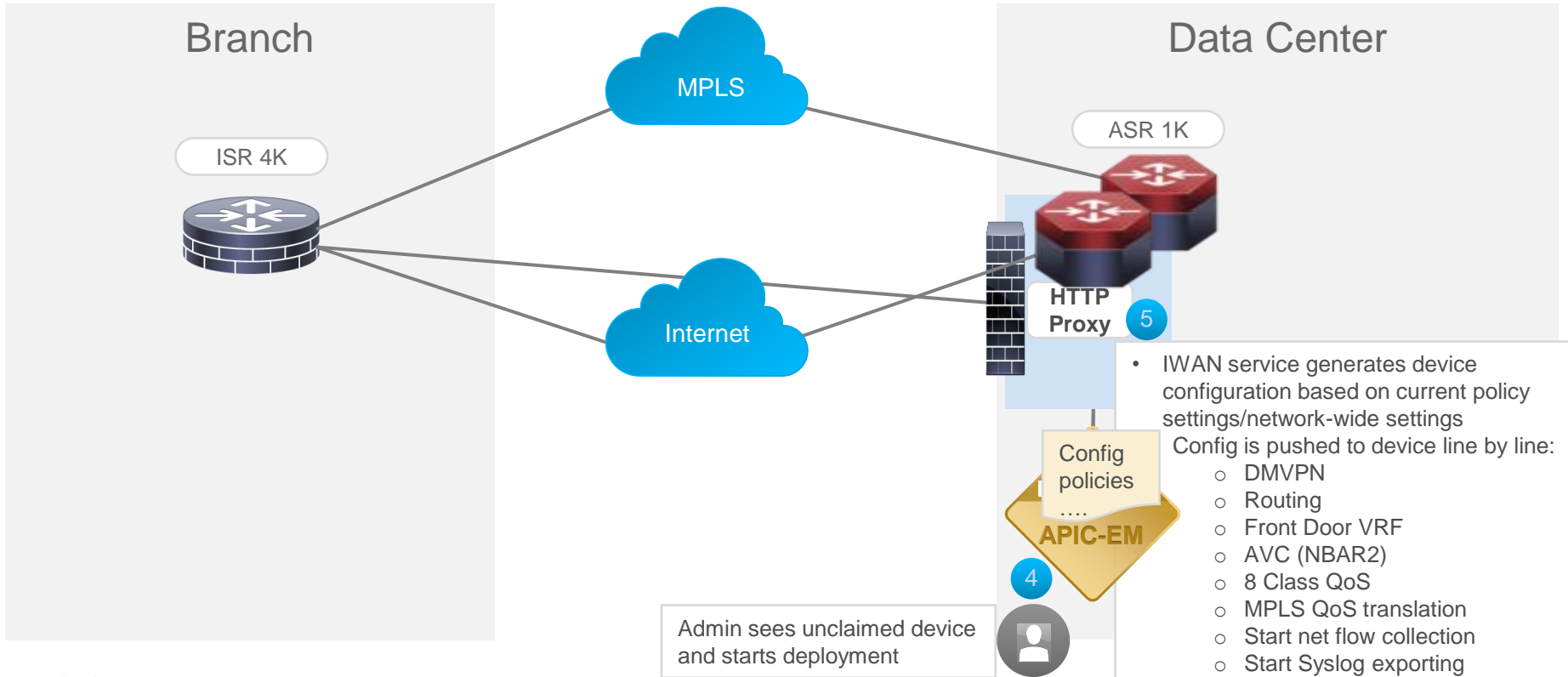
- Connect Internet and MPLS cables
- Insert PnP bootstrap USB stick
- Power up ISR 4K

- Network wide settings have been defined
- Datacenter has been configured
- Application policies have been set



- IWAN config is applied
- Hybrid WAN tunnel come up

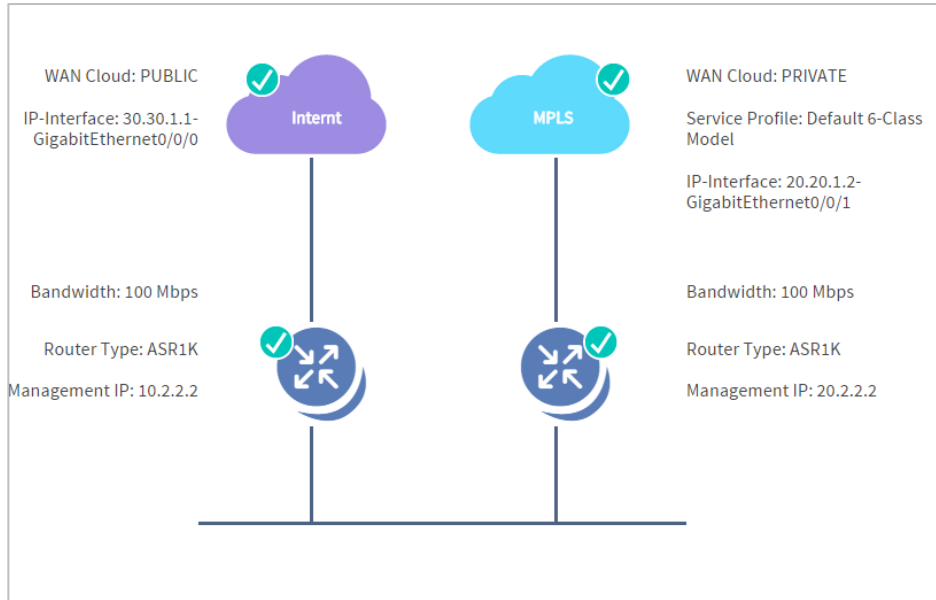
- Controller generates IWAN config
- Controller pushes config to device



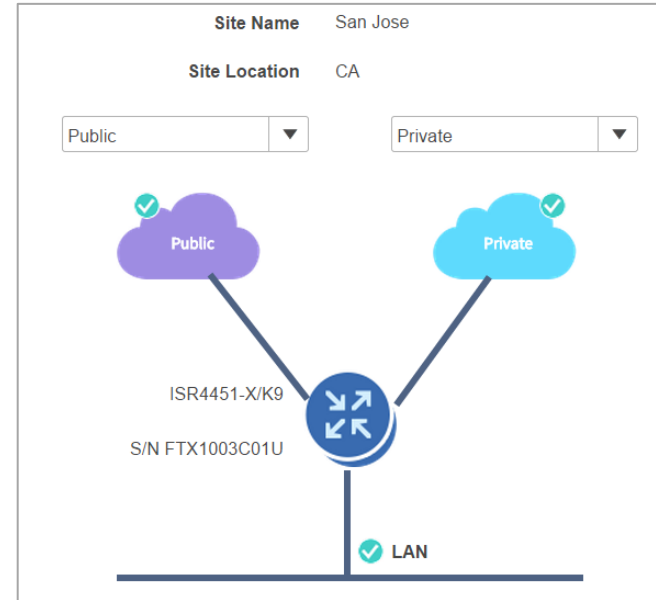
Demo

Typical IWAN App deployment topology

Datacenter (POP) Aggregation



Branch – Dual Links



IWAN Dashboard

Quick path to operations that require attention

[Audit Logs](#)

Hub site is ready.
Manage branch sites.

- 0 Provisioned
- 5 In-Progress
- 0 Failed

Update Hub Site & Settings

Configured

10 Scheduled Job(s)

Administer Application Policy

4 Business Category(s) 6 Scavenger Category(s) 3 Default Category(s)

2 Scheduled Job(s)

Set up Branch Sites

6 Unclaimed Device(s) 5 Site(s)

11 Scheduled Job(s)

Network wide settings

System

IP Address Pools

Service Providers

IWAN aggregation site

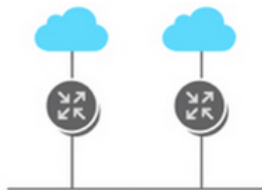
Certified IOS releases

Apply Changes

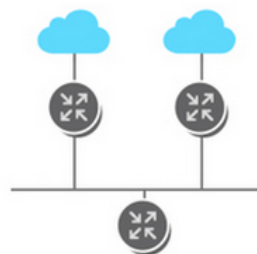
- Select Topology
- Configure Hub Site

Select Topology

Routers with no External Master Controller



Routers with External Master Controller



Previous

Next

Network wide settings

System

IP Address Pools

Service Providers

IWAN aggregation site

Certified IOS releases

Apply Changes

Select Hub Configuration

WAN Cloud: PUBLIC
IP-Interface: 20.20.1.2-GigabitEthernet0/0/1



WAN Cloud: PUBLIC
IP-Interface: 30.30.1.1-GigabitEthernet0/0/0

Bandwidth: 500 Mbps

Router Type: ASR1K
Management IP: 10.22.1.2



Bandwidth: 100 Mbps

Router Type: ASR1K
Management IP: 10.43.2.2

Previous

Next

Provisioning Site

Apply Changes

Site

Select Topology

Edit site name and loca...

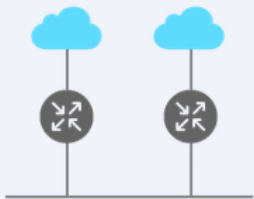
Configure WAN Clouds

Configure LAN

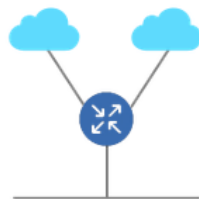
Site Summary

Select Topology

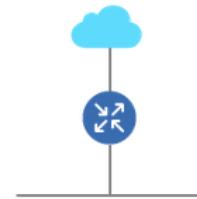
Two Router Configuration



One router with two WAN clouds configuration



One Router Configuration



Previous

Next



Deploy a new site



Provisioning Site

Site

Apply Changes

Select Topology

Edit site name and loca...

Configure WAN Clouds

Configure LAN

Site Summary

Configure WAN Clouds

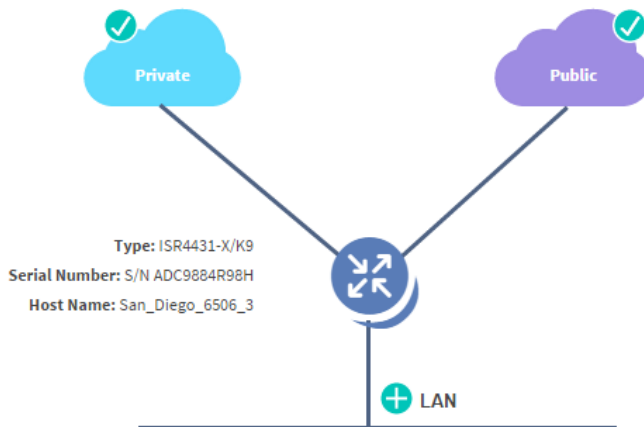
Site Name San Diego

Site Location UNKNOWN

[Set Geo](#)

mpls

int



Previous

Next

Categorize Applications Add Custom Application

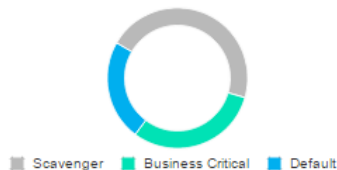


Application Policy

Categorize Applications



Define Application Policy



Apply Changes

Add Application

Add Application



* Name

Type URL Server IP/Port DSCP

Protocol UDP TCP

* Value

* Similar to App

* Category

Jitter

Packet loss

Delay

Add

Cancel

Search Apps

business-and-productivity-tools 33 ...

file-sharing 35 ...

social-networking 8 ...

consumer_apps 58 ...

gaming 13 ...

software-updates 7 ...



Application priority policy setting in IWAN app

- Path Preference
- Drag & Drop business buckets

Categorize Applications



Top 5 Application Categories

Define Application Policy



Business Critical Scavenger Default

Apply Changes

Business Critical

- business-and-prod...
- email
- software-updates
- voice-and-video
- database
- file-sharing
- browsing
- backup-and-storage

Scavenger

- gaming *No App Performance*
- consumer_apps *No App Performance*
- instant-messaging *No App Performance*
- social-networking *No App Performance*

Application Performance

No path preference

Path Preference

Path 1

Path 2

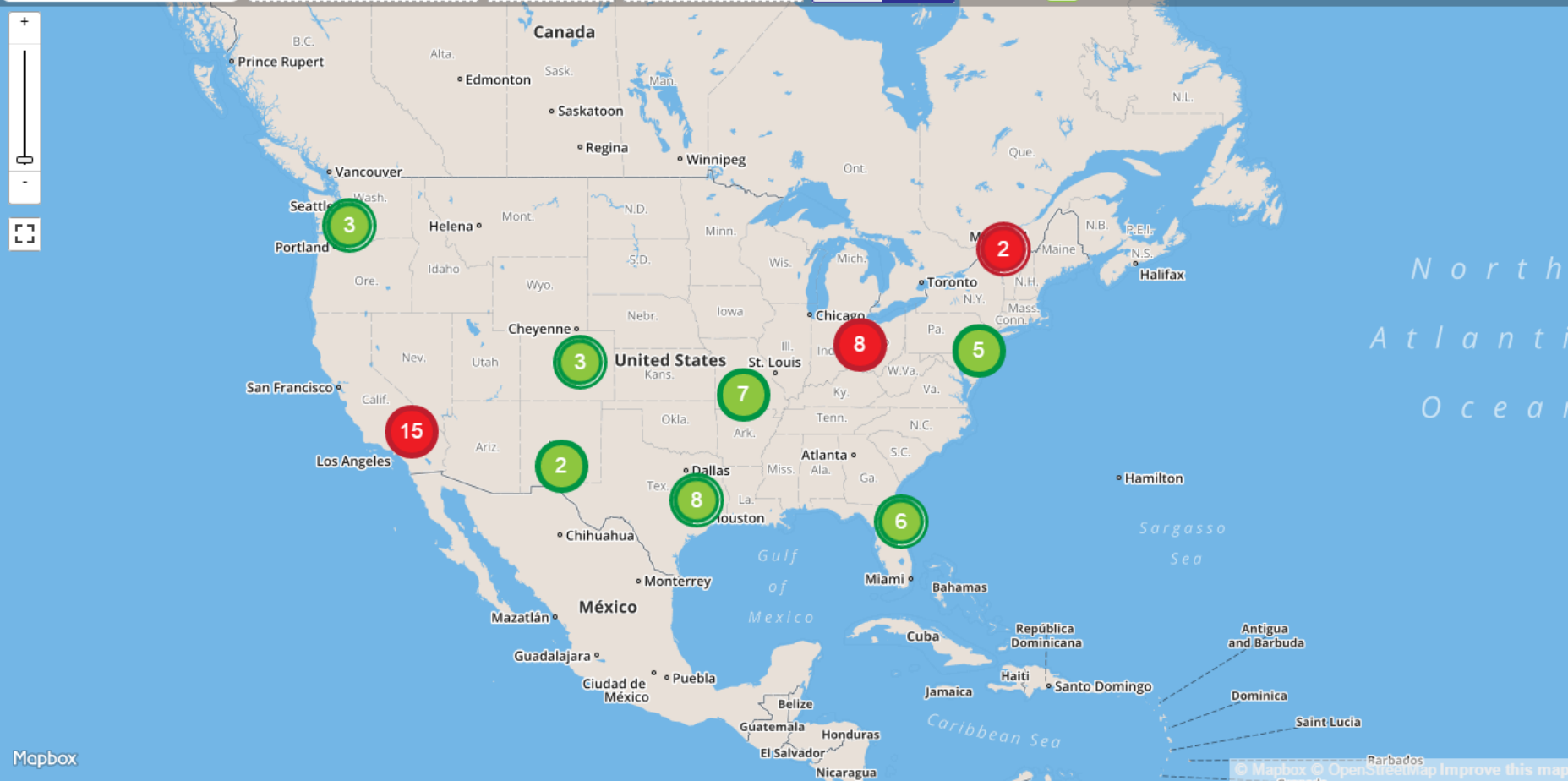
Save

Default

- other *No App Performance*

Map view with geo location

Search by Site Name... 25 Sites 34 Sites HUB Site 5 Unmapped Sites List Map Edit Mode Off



Site summary from map view

Search by Site Name...

13 Sites

HUB Site

5 Unmapped Sites

List

Map

Edit Mode Off

Riverton

Casper

US 385

Site Name : San Diego
 Site Location : San Diego
 Status : Up

WAN Cloud : int
 Bandwidth(Mbps) : 78
 CE IP Address : 1.1.1.2
 CE IP Address : 1.1.1.1

```

      graph TD
        Private((Private)) --- Router((Router))
        Public((Public)) --- Router
        Router --- LAN[LAN]
      
```

WAN Cloud : mpls
 Bandwidth(Mbps) : 300

Type : ISR4451
 Serial Number : S/N FTX1003C01U
 Host Name : San_Diego_2951_1