



Article ID: 5086

Reboot and Reset Factory Default Settings on the WAP351

Objective

Rebooting a device is used to shut down and restart the device with a saved configuration. The factory default is used to restore the factory default configuration on the device to remove any previous configurations.

The objective of this document is to show you how to reboot your WAP351 device and reset it to the factory default.

Applicable Devices

- WAP351

Software Version

- 1.0.0.39

Reset to Factory Default

There are two ways to reset the Access Point to the factory default configuration:

- Hardware reset
- Reset with the use of the web configuration utility

Hardware Reset

Step 1. Press and hold the **Reset** button located at the back of the device for approximately ten seconds with a pin.

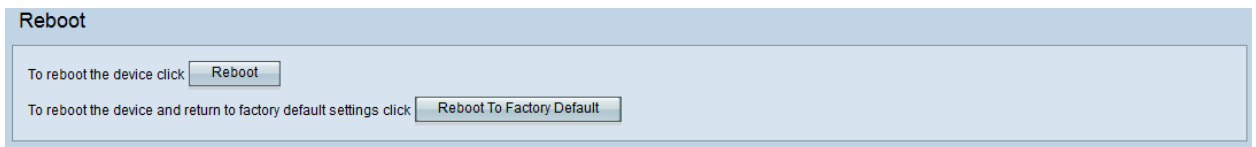


The Access Point reloads and is set to the default configuration settings.

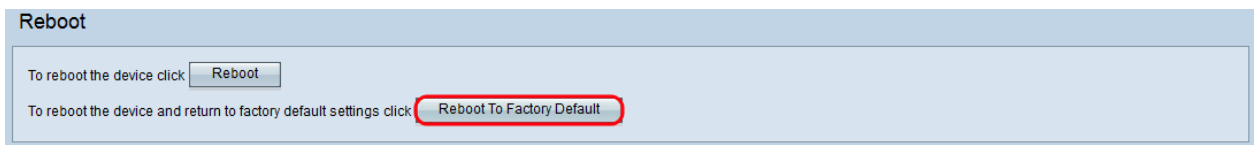
Step 2. Login with the default credentials. The default username is *cisco*, and the default password is *cisco*.

Reset with the use of the Web Configuration Utility

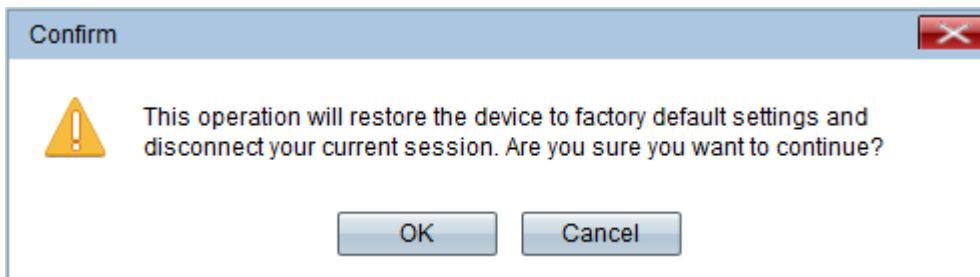
Step 1. Log into the web configuration utility page and choose **Administration > Reboot**. The *Reboot* page opens:



Step 2. To reset the device, click the **Reboot To Factory Default** button.



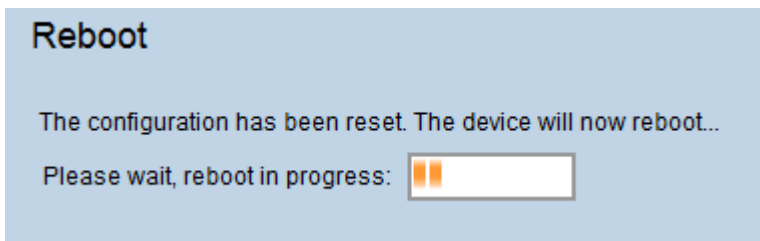
A *Confirm* page appears:



Step 3. Click **OK**.



A Progress Bar appears:



Step 4. After the reboot is completed, login with the default credentials. The default username is *cisco*, and the default password is *cisco*.

Rebooting the Device

There are two ways to reboot the Access Point:

- Hardware reboot
- Reboot with the use of the web configuration utility

Hardware Reboot

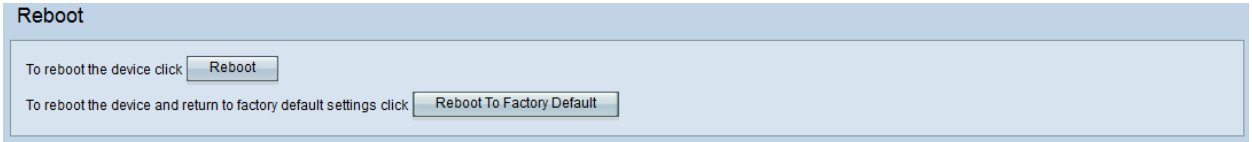
Step 1. Press the **Power** button to turn off the device. After 10 seconds have passed, press the **Power** button a second time to power the device back on.



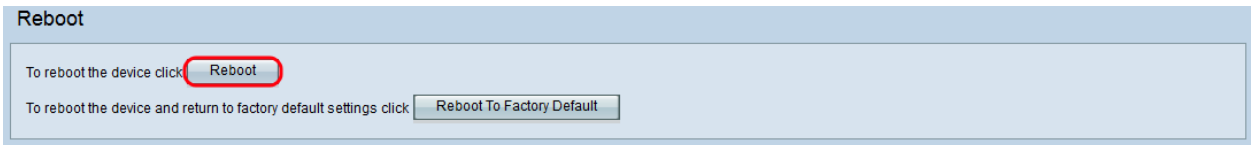
The Access Point reboots.

Reboot with the use of the Web-based utility

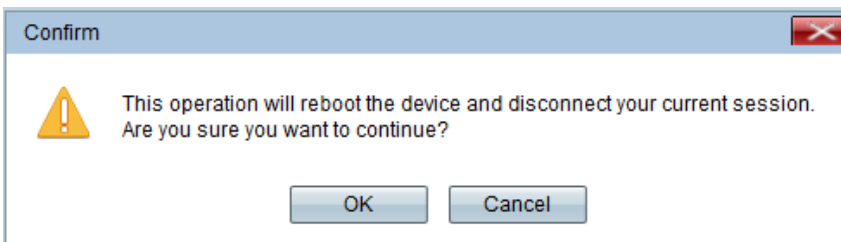
Step 1. Log in to the web configuration utility page and choose **Administration>Reboot**. The *Reboot* page opens:



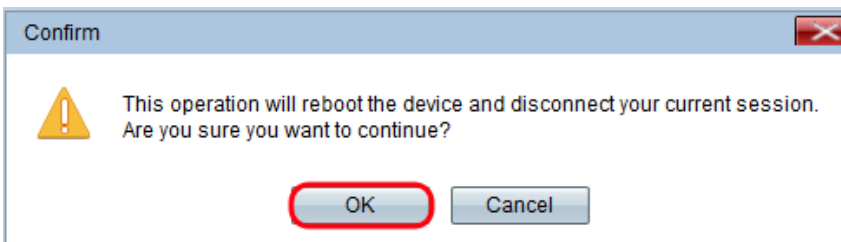
Step 2. To reboot the device, click the **Reboot** button.



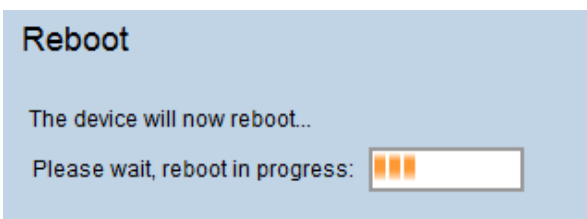
A *Confirm* page appears:



Step 3. Click **OK** to continue with reboot.



A Progress Bar appears:



Step 4. The Login Page appears. Login with the saved administration credentials.