



Article ID: 5055

Configuring Locales on the WAP351 and WAP371 Access Points

Objective

A locale is an authentication web page that is connected to a Captive Portal instance. For information on how to set up a Captive Portal on your device, refer to the article [Configuring Captive Portal on the WAP351 and WAP371 Access Points](#).

Once you have set up a Captive Portal on your WAP, you can use the *Web Portal Customization* page to create unique pages for different locales on your network, and to customize the text and images on the pages.

This objective of this document is to explain how to upload and delete binary image files for web customization on WAP351 and WAP371 access points and customize the authentication page with textual and graphic elements.

Applicable Device

- WAP351
- WAP371

Software Version

- WAP351 v1.0.0.39
- WAP371 v1.1.2.3

Web Customization

Step 1. Log in to the web configuration utility and choose **Captive Portal > Web Portal Customization**. The *Web Portal Customization* page opens:

The screenshot shows a web form titled "Web Portal Customization". At the top, there is a dropdown menu labeled "Captive Portal Web Locale:" with "Create" selected. Below this is a section titled "Captive Portal Web Locale Parameters" containing a text input field for "Web Locale Name:" with a note "(Range: 1 - 32 Characters)" and a dropdown menu for "Captive Portal Instances:" with "CiscoNet" selected. A "Save" button is located at the bottom of the form.

Step 2. Choose **Create** from the *Captive Portal Web Locale* drop-down list to create a locale for the Captive Portal. If you want to edit a previous web locale, choose the created web locale from the *Captive Portal Web Locale* drop-down list and skip to [Step 6](#).

This screenshot is identical to the one above, but a red circle highlights the "Captive Portal Web Locale:" dropdown menu, which still has "Create" selected. The rest of the form, including the "Web Locale Name" field and "Captive Portal Instances" dropdown, remains the same.

Step 3. Enter the name for your locale in the *Web Locale Name* field. The name must be 1-32 character and not contain spaces.

Web Portal Customization

Captive Portal Web Locale: ▾

Captive Portal Web Locale Parameters

Web Locale Name: (Range: 1 - 32 Characters)

Captive Portal Instances: ▾

Step 4. Choose the Captive Portal instance you would like to associate the locale with from the *Captive Portal Instances* drop-down list. For information on setting up a Captive Portal Instance, refer to [Configuring Captive Portal on the WAP351 and WAP371 Access Points](#).

Web Portal Customization

Captive Portal Web Locale: ▾

Captive Portal Web Locale Parameters

Web Locale Name: (Range: 1 - 32 Characters)

Captive Portal Instances: ▾

Step 5. Click **Save** to save configurations made.

Web Portal Customization

Captive Portal Web Locale: ▾

Captive Portal Web Locale Parameters

Web Locale Name: (Range: 1 - 32 Characters)

Captive Portal Instances: ▾

The *Captive Portal Web Locale Parameters* area appears with additional information.

Web Portal Customization

Captive Portal Web Locale: ▾

Captive Portal Web Locale Parameters

Locale ID: 1

Instance Name: CiscoNet

Background Image Name: ▾

Logo Image Name: ▾

Foreground Color: (Range: 1 - 32 Characters, Default: #999999)

Background Color: (Range: 1 - 32 Characters, Default: #BFBFBF)

Separator: (Range: 1 - 32 Characters, Default: #BFBFBF)

Note: In the *Captive Portal Web Locale Parameters* area, the following fields are generated automatically and cannot be edited from this page:

- Locale ID — Displays the sequence number of the locale.
- Instance Name — Displays the name of the chosen instance.

Step 6. Choose the image for the background of your Captive Portal from the *Background Image Name* drop-down list.

Web Portal Customization

Captive Portal Web Locale: CiscoLocale ▼

Captive Portal Web Locale Parameters

Locale ID: 1

Instance Name: CiscoNet

Background Image Name: cisco_bkg.jpg ▼ Upload/Delete Custom Image

Logo Image Name: cisco_logo.png ▼ Upload/Delete Custom Image

Foreground Color: #999999 (Range: 1 - 32 Characters, Default: #999999)

Background Color: #BFBFBF (Range: 1 - 32 Characters, Default: #BFBFBF)

Separator: #BFBFBF (Range: 1 - 32 Characters, Default: #BFBFBF)

Note: If you want to upload or delete an image from the list, click the **Upload/Delete Custom Image** button. For information on uploading and delete custom images see [Upload/Delete Custom Images](#).

Web Portal Customization

Captive Portal Web Locale: CiscoLocale ▼

Captive Portal Web Locale Parameters

Locale ID: 1

Instance Name: CiscoNet

Background Image Name: cisco_bkg.jpg ▼ Upload/Delete Custom Image

Logo Image Name: cisco_logo.png ▼ Upload/Delete Custom Image

Foreground Color: #999999 (Range: 1 - 32 Characters, Default: #999999)

Background Color: #BFBFBF (Range: 1 - 32 Characters, Default: #BFBFBF)

Separator: #BFBFBF (Range: 1 - 32 Characters, Default: #BFBFBF)

Step 7. Choose an image for the logo from the *Logo Image Name* drop-down list.

Web Portal Customization

Captive Portal Web Locale: CiscoLocale ▼

Captive Portal Web Locale Parameters

Locale ID: 1

Instance Name: CiscoNet

Background Image Name: cisco_bkg.jpg ▼ Upload/Delete Custom Image

Logo Image Name: cisco_logo.png ▼ Upload/Delete Custom Image

Foreground Color: #999999 (Range: 1 - 32 Characters, Default: #999999)

Background Color: #BFBFBF (Range: 1 - 32 Characters, Default: #BFBFBF)

Separator: #BFBFBF (Range: 1 - 32 Characters, Default: #BFBFBF)

Note: If you want to upload or delete an image from the list, then click the **Upload/Delete Custom Image** button. For information on uploading and delete custom images see [Upload/Delete Custom Images](#).

Web Portal Customization

Captive Portal Web Locale: CiscoLocale ▼

Captive Portal Web Locale Parameters

Locale ID: 1

Instance Name: CiscoNet

Background Image Name: cisco_bkg.jpg ▼ Upload/Delete Custom Image

Logo Image Name: cisco_logo.png ▼ Upload/Delete Custom Image

Foreground Color: #999999 (Range: 1 - 32 Characters, Default: #999999)

Background Color: #BFBFBF (Range: 1 - 32 Characters, Default: #BFBFBF)

Separator: #BFBFBF (Range: 1 - 32 Characters, Default: #BFBFBF)

Step 8. Enter the HTML code for the foreground color in the *Foreground Color* field. The code is in 6-digit hexadecimal format.

Web Portal Customization

Captive Portal Web Locale: CiscoLocale ▼

Captive Portal Web Locale Parameters

Locale ID: 1

Instance Name: CiscoNet

Background Image Name: cisco_bkg.jpg ▼ Upload/Delete Custom Image

Logo Image Name: cisco_logo.png ▼ Upload/Delete Custom Image

Foreground Color: #999999 (Range: 1 - 32 Characters, Default: #999999)

Background Color: #BFBFBF (Range: 1 - 32 Characters, Default: #BFBFBF)

Separator: #BFBFBF (Range: 1 - 32 Characters, Default: #BFBFBF)

Note: For more information on the formatting of web colors, refer to [this article](#).

Note: For aid in generating hexadecimal HTML color codes using a palette based GUI you may visit the page [HERE](#).

Step 9. Enter the HTML code for the background color in the *Background Color* field. The code is in 6-digit hexadecimal format.

Web Portal Customization

Captive Portal Web Locale: CiscoLocale ▼

Captive Portal Web Locale Parameters

Locale ID: 1

Instance Name: CiscoNet

Background Image Name: cisco_bkg.jpg ▼ Upload/Delete Custom Image

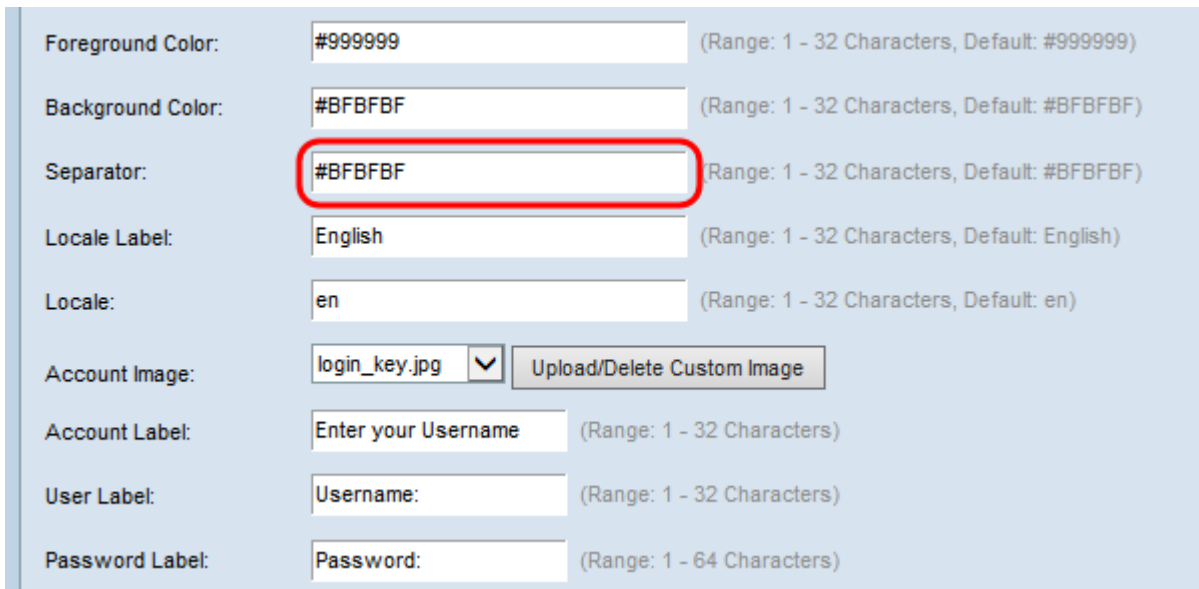
Logo Image Name: cisco_logo.png ▼ Upload/Delete Custom Image

Foreground Color: #999999 (Range: 1 - 32 Characters, Default: #999999)

Background Color: #BFBFBF (Range: 1 - 32 Characters, Default: #BFBFBF)

Separator: #BFBFBF (Range: 1 - 32 Characters, Default: #BFBFBF)

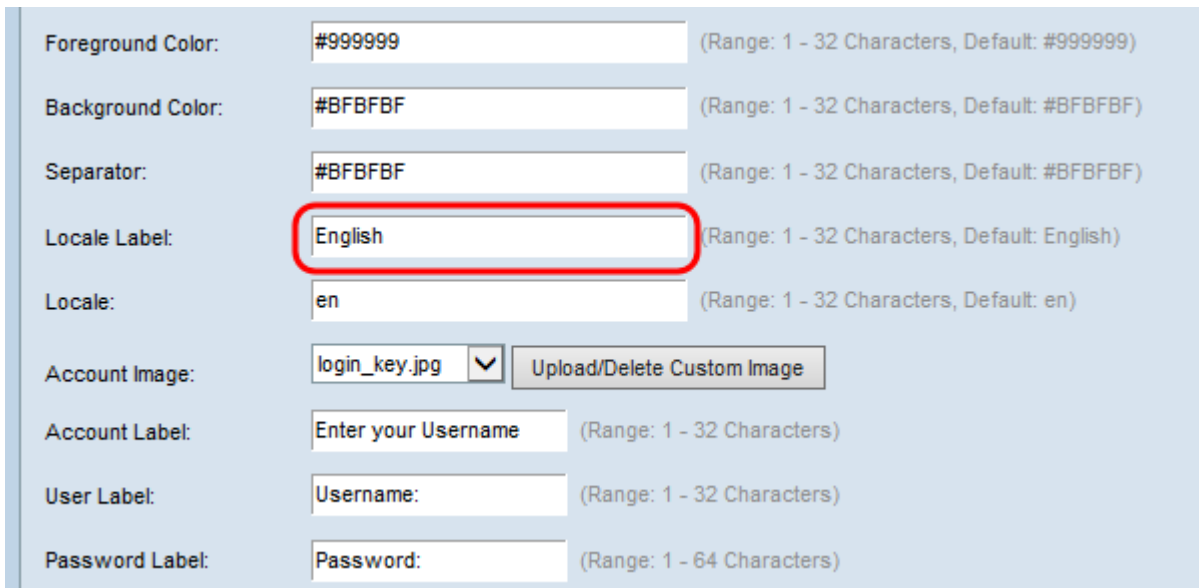
Step 10. Enter the HTML code for the color of the separator (line that separates the header from the body page) in the *Separator* field. The code is in 6-digit hexadecimal format.



A screenshot of a configuration form with a light blue background. The form contains several fields with labels on the left and input boxes on the right. The fields are: Foreground Color (value: #999999), Background Color (value: #BFBFBF), Separator (value: #BFBFBF, highlighted with a red circle), Locale Label (value: English), Locale (value: en), Account Image (value: login_key.jpg with a dropdown arrow and an Upload/Delete Custom Image button), Account Label (value: Enter your Username), User Label (value: Username), and Password Label (value: Password). Each field has a range and default value in parentheses to its right.

Foreground Color:	<input type="text" value="#999999"/>	(Range: 1 - 32 Characters, Default: #999999)
Background Color:	<input type="text" value="#BFBFBF"/>	(Range: 1 - 32 Characters, Default: #BFBFBF)
Separator:	<input type="text" value="#BFBFBF"/>	(Range: 1 - 32 Characters, Default: #BFBFBF)
Locale Label:	<input type="text" value="English"/>	(Range: 1 - 32 Characters, Default: English)
Locale:	<input type="text" value="en"/>	(Range: 1 - 32 Characters, Default: en)
Account Image:	<input type="text" value="login_key.jpg"/> <input type="button" value="Upload/Delete Custom Image"/>	
Account Label:	<input type="text" value="Enter your Username"/>	(Range: 1 - 32 Characters)
User Label:	<input type="text" value="Username"/>	(Range: 1 - 32 Characters)
Password Label:	<input type="text" value="Password"/>	(Range: 1 - 64 Characters)

Step 11. Enter a label that describes the locale in the *Locale Label* field. The default is English.



A screenshot of a configuration form with a light blue background, identical to the one above. The fields are: Foreground Color (value: #999999), Background Color (value: #BFBFBF), Separator (value: #BFBFBF), Locale Label (value: English, highlighted with a red circle), Locale (value: en), Account Image (value: login_key.jpg with a dropdown arrow and an Upload/Delete Custom Image button), Account Label (value: Enter your Username), User Label (value: Username), and Password Label (value: Password). Each field has a range and default value in parentheses to its right.

Foreground Color:	<input type="text" value="#999999"/>	(Range: 1 - 32 Characters, Default: #999999)
Background Color:	<input type="text" value="#BFBFBF"/>	(Range: 1 - 32 Characters, Default: #BFBFBF)
Separator:	<input type="text" value="#BFBFBF"/>	(Range: 1 - 32 Characters, Default: #BFBFBF)
Locale Label:	<input type="text" value="English"/>	(Range: 1 - 32 Characters, Default: English)
Locale:	<input type="text" value="en"/>	(Range: 1 - 32 Characters, Default: en)
Account Image:	<input type="text" value="login_key.jpg"/> <input type="button" value="Upload/Delete Custom Image"/>	
Account Label:	<input type="text" value="Enter your Username"/>	(Range: 1 - 32 Characters)
User Label:	<input type="text" value="Username"/>	(Range: 1 - 32 Characters)
Password Label:	<input type="text" value="Password"/>	(Range: 1 - 64 Characters)

Step 12. Enter an abbreviation for the locale in the *Locale* field. The default is en.

Foreground Color:	<input type="text" value="#999999"/>	(Range: 1 - 32 Characters, Default: #999999)
Background Color:	<input type="text" value="#BFBFBF"/>	(Range: 1 - 32 Characters, Default: #BFBFBF)
Separator:	<input type="text" value="#BFBFBF"/>	(Range: 1 - 32 Characters, Default: #BFBFBF)
Locale Label:	<input type="text" value="English"/>	(Range: 1 - 32 Characters, Default: English)
Locale:	<input type="text" value="en"/>	(Range: 1 - 32 Characters, Default: en)
Account Image:	<input type="text" value="login_key.jpg"/> <input type="button" value="v"/>	<input type="button" value="Upload/Delete Custom Image"/>
Account Label:	<input type="text" value="Enter your Username"/>	(Range: 1 - 32 Characters)
User Label:	<input type="text" value="Username:"/>	(Range: 1 - 32 Characters)
Password Label:	<input type="text" value="Password:"/>	(Range: 1 - 64 Characters)

Step 13. From the *Account Image* drop-down list, choose the image to depict an authenticated login above the login field.

Foreground Color:	<input type="text" value="#999999"/>	(Range: 1 - 32 Characters, Default: #999999)
Background Color:	<input type="text" value="#BFBFBF"/>	(Range: 1 - 32 Characters, Default: #BFBFBF)
Separator:	<input type="text" value="#BFBFBF"/>	(Range: 1 - 32 Characters, Default: #BFBFBF)
Locale Label:	<input type="text" value="English"/>	(Range: 1 - 32 Characters, Default: English)
Locale:	<input type="text" value="en"/>	(Range: 1 - 32 Characters, Default: en)
Account Image:	<input type="text" value="login_key.jpg"/> <input type="button" value="v"/>	<input type="button" value="Upload/Delete Custom Image"/>
Account Label:	<input type="text" value="Enter your Username"/>	(Range: 1 - 32 Characters)
User Label:	<input type="text" value="Username:"/>	(Range: 1 - 32 Characters)
Password Label:	<input type="text" value="Password:"/>	(Range: 1 - 64 Characters)

Note: If you want to upload or delete an image from the list, then click the **Upload/Delete Custom Image** button. For information on uploading and delete custom images see [Upload/Delete Custom Images](#).

Foreground Color:	<input type="text" value="#999999"/>	(Range: 1 - 32 Characters, Default: #999999)
Background Color:	<input type="text" value="#BFBFBF"/>	(Range: 1 - 32 Characters, Default: #BFBFBF)
Separator:	<input type="text" value="#BFBFBF"/>	(Range: 1 - 32 Characters, Default: #BFBFBF)
Locale Label:	<input type="text" value="English"/>	(Range: 1 - 32 Characters, Default: English)
Locale:	<input type="text" value="en"/>	(Range: 1 - 32 Characters, Default: en)
Account Image:	<input type="text" value="login_key.jpg"/> <input type="button" value="Upload/Delete Custom Image"/>	
Account Label:	<input type="text" value="Enter your Username"/>	(Range: 1 - 32 Characters)
User Label:	<input type="text" value="Username:"/>	(Range: 1 - 32 Characters)
Password Label:	<input type="text" value="Password:"/>	(Range: 1 - 64 Characters)

Step 14. Enter the text which gives the user the instruction to enter a user name in the *Account Label* field.

Foreground Color:	<input type="text" value="#999999"/>	(Range: 1 - 32 Characters, Default: #999999)
Background Color:	<input type="text" value="#BFBFBF"/>	(Range: 1 - 32 Characters, Default: #BFBFBF)
Separator:	<input type="text" value="#BFBFBF"/>	(Range: 1 - 32 Characters, Default: #BFBFBF)
Locale Label:	<input type="text" value="English"/>	(Range: 1 - 32 Characters, Default: English)
Locale:	<input type="text" value="en"/>	(Range: 1 - 32 Characters, Default: en)
Account Image:	<input type="text" value="login_key.jpg"/> <input type="button" value="Upload/Delete Custom Image"/>	
Account Label:	<input type="text" value="Enter your Username"/>	(Range: 1 - 32 Characters)
User Label:	<input type="text" value="Username:"/>	(Range: 1 - 32 Characters)
Password Label:	<input type="text" value="Password:"/>	(Range: 1 - 64 Characters)

Step 15. Enter text to label the user name text box in the *User Label* field.

Foreground Color:	<input type="text" value="#999999"/>	(Range: 1 - 32 Characters, Default: #999999)
Background Color:	<input type="text" value="#BFBFBF"/>	(Range: 1 - 32 Characters, Default: #BFBFBF)
Separator:	<input type="text" value="#BFBFBF"/>	(Range: 1 - 32 Characters, Default: #BFBFBF)
Locale Label:	<input type="text" value="English"/>	(Range: 1 - 32 Characters, Default: English)
Locale:	<input type="text" value="en"/>	(Range: 1 - 32 Characters, Default: en)
Account Image:	<input type="text" value="login_key.jpg"/> <input type="button" value="Upload/Delete Custom Image"/>	
Account Label:	<input type="text" value="Enter your Username"/>	(Range: 1 - 32 Characters)
User Label:	<input type="text" value="Username"/>	(Range: 1 - 32 Characters)
Password Label:	<input type="text" value="Password"/>	(Range: 1 - 64 Characters)

Step 16. Enter text to label the user password text box in the *Password Label* field.

User Label:	<input type="text" value="Username"/>	(Range: 1 - 32 Characters)
Password Label:	<input type="text" value="Password"/>	(Range: 1 - 64 Characters)
Button Label:	<input type="text" value="Connect"/>	(Range: 2 - 32 Characters, Default: Connect)
Fonts:	<input type="text" value="'MS UI Gothic', arial, sans-serif"/>	(Range: 1 - 512 Characters, Default: 'MS UI Gothic', arial, sans-serif)
Browser Title:	<input type="text" value="Captive Portal"/>	(Range: 1 - 128 Characters, Default: Captive Portal)
Browser Content:	<input type="text" value="Welcome to the Wireless Network"/>	(Range: 1 - 128 Characters, Default: Welcome to the Wireless Network)

Step 17. Enter text to label the button used to submit user name and password information in the *Button Label* field.

User Label:	<input type="text" value="Username"/>	(Range: 1 - 32 Characters)
Password Label:	<input type="password" value="Password"/>	(Range: 1 - 64 Characters)
Button Label:	<input type="text" value="Connect"/>	(Range: 2 - 32 Characters, Default: Connect)
Fonts:	<input type="text" value="'MS UI Gothic', arial, sans-serif"/>	(Range: 1 - 512 Characters, Default: 'MS UI Gothic', arial, sans-serif)
Browser Title:	<input type="text" value="Captive Portal"/>	(Range: 1 - 128 Characters, Default: Captive Portal)
Browser Content:	<input type="text" value="Welcome to the Wireless Network"/>	(Range: 1 - 128 Characters, Default: Welcome to the Wireless Network)

Step 18. Enter the name of the font to use for all text on the Captive Portal page in the *Fonts* field. You can enter multiple font names, each separated by a comma. If the first font is not available on the client system, the next font is used, and so on. For font names that have spaces, the entire name must be surrounded in single quotes.

User Label:	<input type="text" value="Username"/>	(Range: 1 - 32 Characters)
Password Label:	<input type="password" value="Password"/>	(Range: 1 - 64 Characters)
Button Label:	<input type="text" value="Connect"/>	(Range: 2 - 32 Characters, Default: Connect)
Fonts:	<input type="text" value="'MS UI Gothic', arial, sans-serif"/>	(Range: 1 - 512 Characters, Default: 'MS UI Gothic', arial, sans-serif)
Browser Title:	<input type="text" value="Captive Portal"/>	(Range: 1 - 128 Characters, Default: Captive Portal)
Browser Content:	<input type="text" value="Welcome to the Wireless Network"/>	(Range: 1 - 128 Characters, Default: Welcome to the Wireless Network)

Step 19. Enter the text to be displayed in the title bar of the browser window in the *Browser Title* field.

User Label:	Username:	(Range: 1 - 32 Characters)
Password Label:	Password:	(Range: 1 - 64 Characters)
Button Label:	Connect	(Range: 2 - 32 Characters, Default: Connect)
Fonts:	'MS UI Gothic', arial, sans-serif	(Range: 1 - 512 Characters, Default: 'MS UI Gothic', arial, sans-serif)
Browser Title:	Captive Portal	(Range: 1 - 128 Characters, Default: Captive Portal)
Browser Content:	Welcome to the Wireless Network	(Range: 1 - 128 Characters, Default: Welcome to the Wireless Network)

Step 20. Enter the welcome text that is displayed to the right of the logo image in the *Browser Content* field.

Browser Content:	Welcome to the Wireless Network	(Range: 1 - 128 Characters, Default: Welcome to the Wireless Network)
Content:	To start using this service, enter your credentials and click the connect button.	(Range: 1 - 256 Characters, Default: To start using this service, enter your credentia
Acceptance Use Policy:	Acceptance Use Policy.	(Range: 1 - 4096 Characters, Default: Acceptance Use Policy.)

Step 21. Enter instructive text for the user to be displayed below the user name and password text boxes in the *Content* field.

Browser Content:	Welcome to the Wireless Network	(Range: 1 - 128 Characters, Default: Welcome to the Wireless Network)
Content:	To start using this service, enter your credentials and click the connect button.	(Range: 1 - 256 Characters, Default: To start using this service, enter your credentials)
Acceptance Use Policy:	Acceptance Use Policy.	(Range: 1 - 4096 Characters, Default: Acceptance Use Policy.)

Step 22. Enter the conditions that the user has to accept to login in the *Acceptance Use Policy* field.

Acceptance Use Policy:	Acceptance Use Policy.	(Range: 1 - 4096 Characters, Default: Acceptance Use Policy.)
Accept Label:	Check here to indicate that you have read and accepted the Acceptance Use Policy.	(Range: 1 - 128 Characters, Default: Check here to indicate that yo
No Accept Text:	Error: You must acknowledge the Acceptance Use Policy before connecting!	(Range: 1 - 128 Characters, Default: Error: You must acknowledge

Step 23. Enter the text prompting users to select the check box to accept the Acceptance Use Policy the *Accept Label* field.

Acceptance Use Policy:	Acceptance Use Policy.	(Range: 1 - 4096 Characters, Default: Acceptance Use Policy.)
Accept Label:	Check here to indicate that you have read and accepted the Acceptance Use Policy.	(Range: 1 - 128 Characters, Default: Check here to indicate that yo
No Accept Text:	Error: You must acknowledge the Acceptance Use Policy before connecting!	(Range: 1 - 128 Characters, Default: Error: You must acknowledge

Step 24. In the *No Accept Text* field, enter the text which appears when the user does not accept the Acceptance Use Policy and attempts to log in.

No Accept Text:	Error: You must acknowledge the Acceptance Use Policy before connecting!	(Range: 1 - 128 Characters, Default: Error: You must acknowledge the Acceptanc
Work In Progress Text:	Connecting, please be patient...	(Range: 1 - 128 Characters, Default: Connecting, please be patient...)
Denied Text:	Error: Invalid Credentials, please try again!	(Range: 1 - 128 Characters, Default: Error: Invalid Credentials, please try again!)

Step 25. In the *Work In Progress Text* field, enter the text that displays while the user waits for the authentication.

No Accept Text:	Error: You must acknowledge the Acceptance Use Policy before connecting!	(Range: 1 - 128 Characters, Default: Error: You must acknowledge the Acceptanc
Work In Progress Text:	Connecting, please be patient...	(Range: 1 - 128 Characters, Default: Connecting, please be patient...)
Denied Text:	Error: Invalid Credentials, please try again!	(Range: 1 - 128 Characters, Default: Error: Invalid Credentials, please try again!)

Step 26. In the *Denied Text* field, enter the text that is displayed when the authentication of a user fails.

Denied Text: Error: Invalid Credentials, please try again!
(Range: 1 - 128 Characters, Default: Error: Invalid Credentials, please try again!)

Welcome Title: Congratulations!
(Range: 1 - 128 Characters, Default: Congratulations!)

Welcome Content: You are now authorized and connected to the network.
(Range: 1 - 256 Characters, Default: You are now authorized and connected to the network.)

Delete Locale:

Save Preview...

Step 27. In the *Welcome Title* field, enter the text that displays when the user has been authenticated successfully.

Denied Text: Error: Invalid Credentials, please try again!
(Range: 1 - 128 Characters, Default: Error: Invalid Credentials, please try again!)

Welcome Title: Congratulations!
(Range: 1 - 128 Characters, Default: Congratulations!)

Welcome Content: You are now authorized and connected to the network.
(Range: 1 - 256 Characters, Default: You are now authorized and connected to the network.)

Delete Locale:

Save Preview...

Step 28. In the *Welcome Content* field, enter the text that indicates when the user is connected to the network.

Denied Text: Error: Invalid Credentials, please try again!
(Range: 1 - 128 Characters, Default: Error: Invalid Credentials, please try again!)

Welcome Title: Congratulations!
(Range: 1 - 128 Characters, Default: Congratulations!)

Welcome Content: You are now authorized and connected to the network.
(Range: 1 - 256 Characters, Default: You are now authorized and connected to the network)

Delete Locale:

Save Preview...

Step 29. (Optional) If you want to delete the current local configuration, check the *Delete Locale* check box.

Denied Text: Error: Invalid Credentials, please try again!
(Range: 1 - 128 Characters, Default: Error: Invalid Credentials, please try again!)

Welcome Title: Congratulations!
(Range: 1 - 128 Characters, Default: Congratulations!)

Welcome Content: You are now authorized and connected to the network.
(Range: 1 - 256 Characters, Default: You are now authorized and connected to the network)

Delete Locale:

Save Preview...

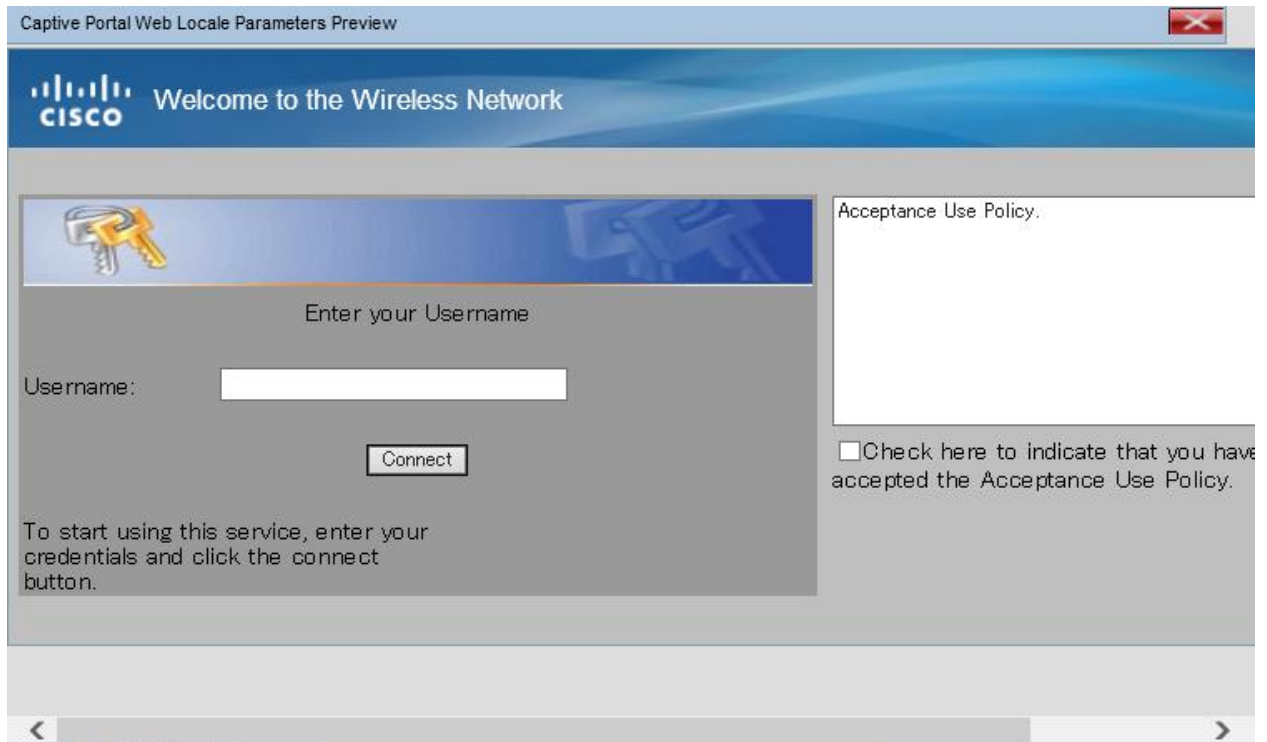
Step 30. Click **Save** to save all the configurations made.

Denied Text:	Error: Invalid Credentials, please try again!	(Range: 1 - 128 Characters, Default: Error: Invalid Credentials, please try again!)
Welcome Title:	Congratulations!	(Range: 1 - 128 Characters, Default: Congratulations!)
Welcome Content:	You are now authorized and connected to the network.	(Range: 1 - 256 Characters, Default: You are now authorized and connected to the network.)
Delete Locale:	<input type="checkbox"/>	
<input type="button" value="Save"/> <input type="button" value="Preview..."/>		

Step 31. (Optional) If you want to preview the local configurations made, then click **Preview**.

Denied Text:	Error: Invalid Credentials, please try again!	(Range: 1 - 128 Characters, Default: Error: Invalid Credentials, please try again!)
Welcome Title:	Congratulations!	(Range: 1 - 128 Characters, Default: Congratulations!)
Welcome Content:	You are now authorized and connected to the network.	(Range: 1 - 256 Characters, Default: You are now authorized and connected to the network.)
Delete Locale:	<input type="checkbox"/>	
<input type="button" value="Save"/> <input type="button" value="Preview..."/>		

The *Captive Portal Web Locale Web Locale Parameters Preview* page opens:



Note: Preview shows the text and images that have already been saved to the Startup Configuration. If you make a change, click **Save** before clicking Preview to see your changes.

Upload/Delete Custom Images

You may customize the Captive Portal page with your own logo and images. Up to 18 custom images can be uploaded to the device (Assuming 6 configured locales with 3 images each).

Step 1. Click the **Upload/Delete Custom Image** button in the *Captive Portal Web Locale Parameters* page. The *Web Portal Custom Image* page opens:

Web Portal Custom Image

Upload Web Custom Image:

Delete Web Custom Image:

Step 2. If you would like to upload an image to use from your computer, click **Browse** in the *Upload Web Custom Image* field. If you would like to delete an image, skip to [Step 4](#).

Web Portal Custom Image

Upload Web Custom Image:

Delete Web Custom Image:

Note: The image must be 5 kilobytes or smaller and must be a GIF or JPEG format file. Images are resized to fit specified dimensions. For the best appearance, your logo and account images should be of a similar proportion to the default image dimensions listed below:

- Background — 10 by 800 pixels
- Logo — 168 by 78 pixels
- Account — 295 by 55 pixels

Step 3. Click **Upload** to upload the image to the WAP device.

Web Portal Custom Image

Upload Web Custom Image:

Delete Web Custom Image:

Step 4. If you would like to delete an image, Choose the file which you want to be deleted from the *Delete Web Custom Image* drop-down list. Otherwise, skip to [Step 6](#).

Web Portal Custom Image

Upload Web Custom Image:

Delete Web Custom Image:

Step 5. Click **Delete** to delete the selected file from the WAP device.

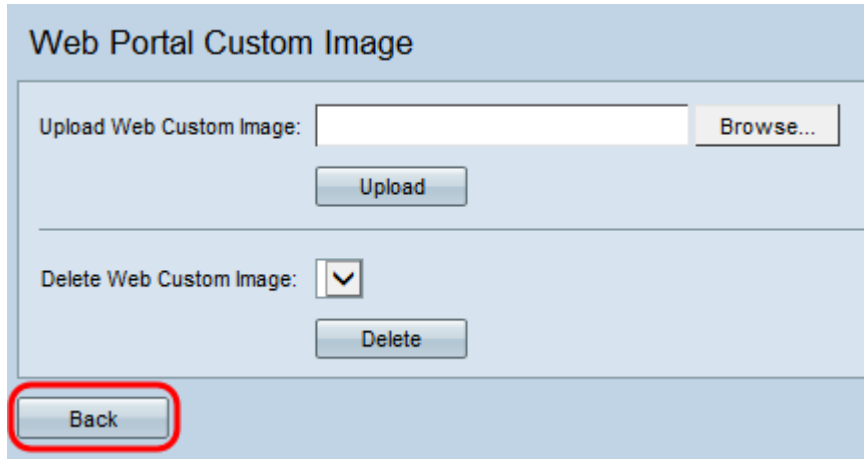
Web Portal Custom Image

Upload Web Custom Image:

Delete Web Custom Image:

Note: Deletion of currently used images will reset the section of the web customization page to default.

Step 6. Click **Back** to navigate back to the *Web Portal Customization* page.

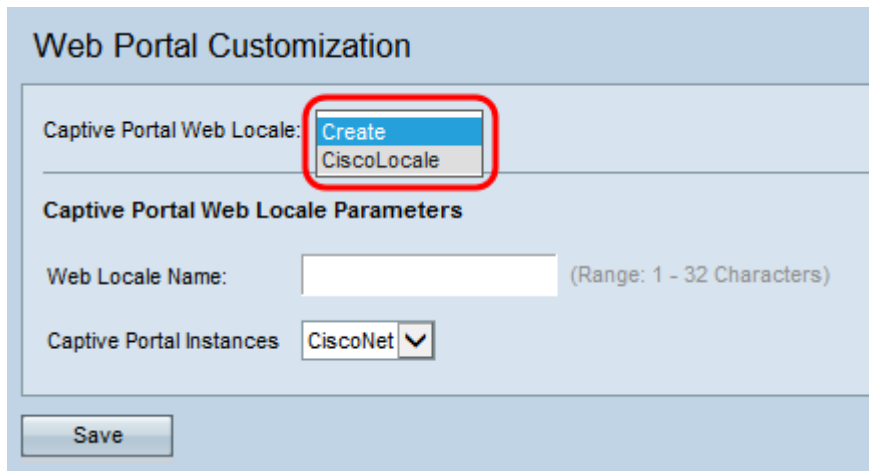


Web Portal Custom Image

Upload Web Custom Image:

Delete Web Custom Image:

Step 7. To resume editing your locale, you will need to select it from the *Captive Portal Web Locale* drop-down list once again.



Web Portal Customization

Captive Portal Web Locale:

Captive Portal Web Locale Parameters

Web Locale Name: (Range: 1 - 32 Characters)

Captive Portal Instances

[You may click here to return to the locale parameters section.](#)