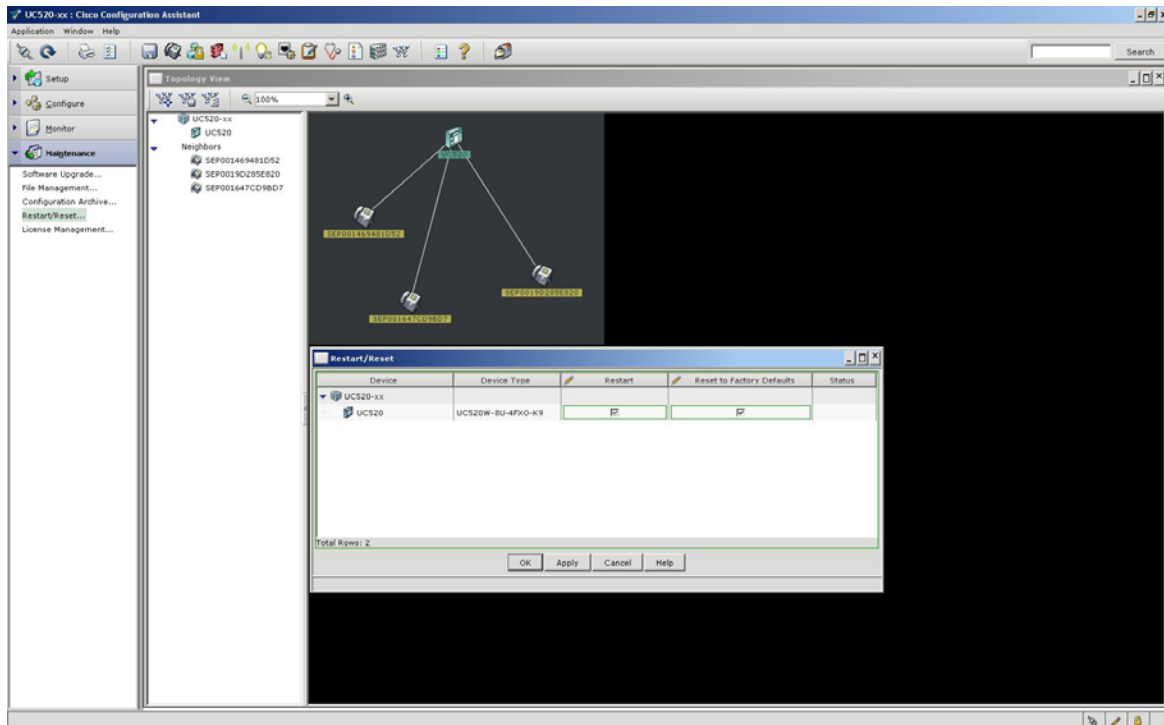


APPENDIX A: Reset to factory default

Click on Maintenance > Restart/Reset. Check the box for “Reset to Factory Default” and click on Apply.



Please wait for 10 minutes once this is done.

You can also use CLI to reset your system to factory default. Plug your laptop in the UC520 POE port & telnet to 192.168.10.1. Username/Password is “cisco/cisco”

For CUE - Session into CUE using "service-module Integrated-Service-Engine 0/0 session" (Hit “enter” twice to get a prompt).

- Type "offline" to go into the offline mode
- Type in "y" when you are prompted with "Are you sure you want to go offline[n]?"
- Type in "restore factory default"
- Type in "y" when you are prompted with "Do you wish to continue[n]?"
- Press any key when prompted "Press any key to reload:"

This reset can take 5-10 mins. Wait until the CUE the message “SYSTEM ONLINE” is displayed before proceeding. Exit the CUE by typing “exit”.

For UC520 - You need to locate the default config file UC520-8U-4FXO-K9-factory.cfg in flash.

Copy the default config to the start-up config using the following command:

```
“copy flash:UC520-8U-4FXO-K9-factory-4.2.4.cfg startup-config”
```

- You will be prompted "Destination filename [startup-config]?", hit ENTER to confirm.

Once the file is copied (and the CUE comes back ONLINE), type “reload” to restart the UC520. When it boots up, it will be in the factory default mode. This can take up to 10 minutes.