

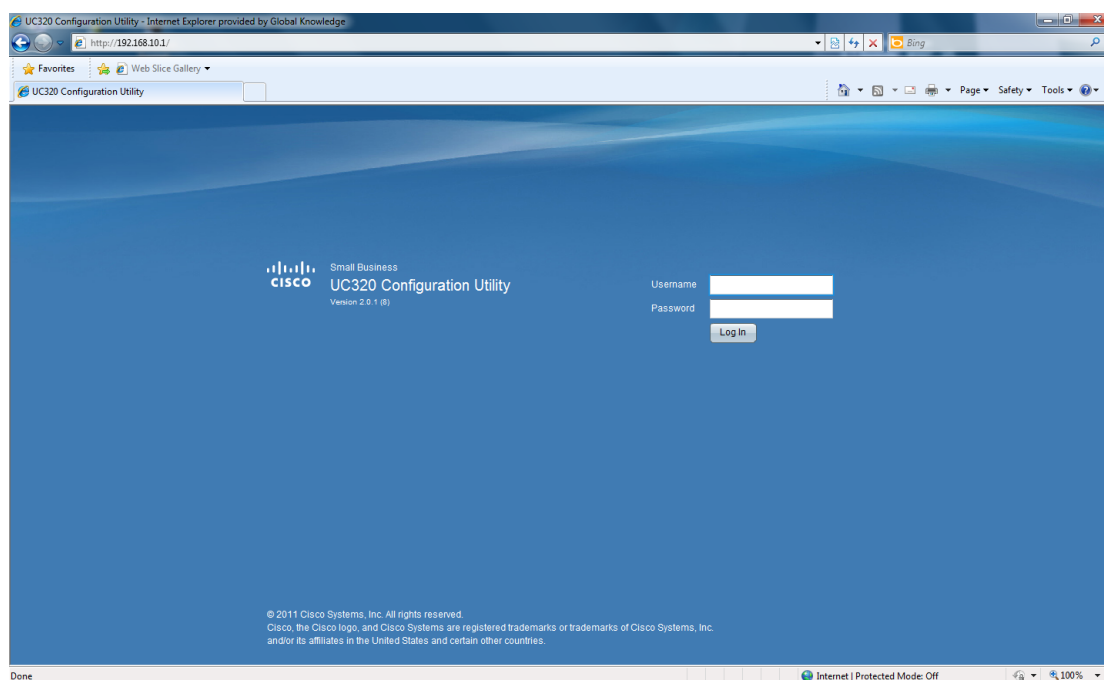
# UC320 Lab 2: Adding a SPA8800 Gateway and SIP Trunk

## Task 1: Logging In and Accessing Configuration

**NOTE** This lab assumes you have completed UC320 Lab 1.

**STEP 1** Open a web browser to <http://192.168.10.1>

**STEP 2** Login with the username of **uc320admin** and password of **logmein**



**STEP 3** Select the **Configuration** option in the top left tool bar

**STEP 4** Select **Devices**

**STEP 5** Record the MAC address of your SPA8800

**STEP 6** In the **SPA8800** section, enter the following items

**STEP 7** Create a short **Description** for your SPA8800 and enter the **MAC address** recorded above.

**STEP 8** Click **Apply Configuration** on the bottom right of the page.

**STEP 9** Click **Apply All Changes**

**NOTE** From now on (anytime after the initial deployment) we need to consider that any application changes take a few minutes and reboot the UC320. Do not do this while calls are up, or they will be lost as well as Internet connectivity.

**STEP 10** If you do not have a SPA8800 present, you will get an error window trying to restart all the devices. Click **Continue** to exit past this and continue on with the lab

**STEP 11** Click **Finish and Apply**

**STEP 12** Under **Ports and Trunks**, select **Line (FXO) Ports**

**STEP 13** Notice now that you have 4 additional FXO ports

**STEP 14** Select the **first and second FXO ports** on the SPA8800. You would need to add

the SPA8800 if you required more than the four FXO ports on the UC320. Do not apply the configuration yet – we can do that after we finish the rest of the configuration.

- STEP 15** Select the **FXS ports** link under the **Port and Trunks** configuration
- STEP 16** Notice that you have 4 additional FXS ports for additional analog phones, FAX machines or other analog devices such as a door release.
- STEP 17** Select the **first and second FXS ports** on the SPA8800 but do not apply the configuration yet.
- STEP 18** Now select the **SIP/BRI trunks** link under **Ports and Trunks**
- STEP 19** Select to add a **Generic SIP Provider**
- STEP 20** Expand the **Settings**
- STEP 21** Add **SIP Trunk** to the description
- STEP 22** Enter the proxy address provided by your instructor.
- STEP 23** Change the call capacity to **2**
- STEP 24** Enter **The Office** as the company name
- STEP 25** Enter the account number provided by your instructor
- STEP 26** Enter the Authentication ID and Password provided by your instructor
- STEP 27** Expand **Systemwide SIP Parameters**
- STEP 28** Keep the defaults of **G.711 codec** and **FAX passthrough**
- STEP 29** Select the Inbound Calls link under
- STEP 30** Click **Add Specified Number** on the SIP trunk
- STEP 31** Enter one of the DIDs allocated to your SIP trunk into the box.
- STEP 32** Add a new route and move the SIP DID entry into that route.
- STEP 33** Select **Michael Scott** as the target for this route.
- STEP 34** Select to use the FXO Line for emergency calls
- STEP 35** Click **Apply Configuration** on the bottom right of the page.
- STEP 36** Click **Apply All Changes** and **OK**
- STEP 37** The UC320 will re-configure and reboot.
- STEP 38** If you get the error window again, click **continue** and **Finish and Apply**
- STEP 39** When everything is rebooted and back to normal, keep the interface open and proceed to Lab 3.

This completes Lab 2.