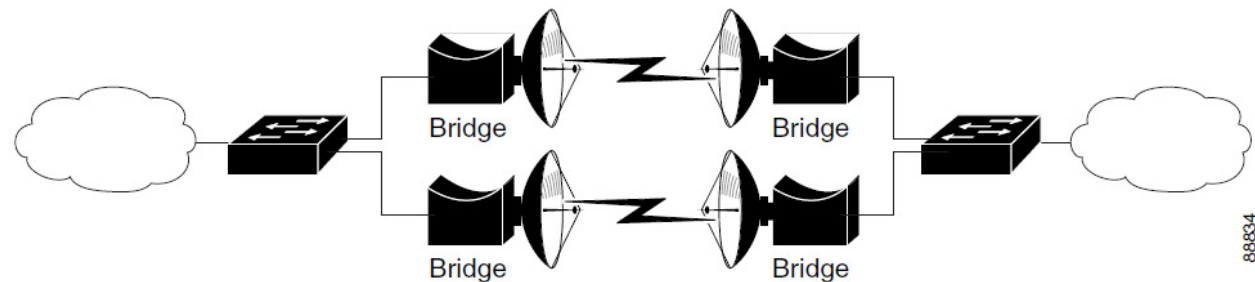


Port Aggregation or Redundancy Configuration

The port aggregation or redundancy configuration (Figure 1-4) is used to provide increased bandwidth or backup redundancy communications between two LANs. Port aggregation or increased bandwidth occurs when both wireless links are used to simultaneously pass Ethernet traffic. Backup communication redundancy can be achieved with this configuration when one wireless bridge link is used only if the other wireless bridge link fails.

Figure 1-4 Port Aggregation or Redundancy Bridge Configuration



Point-to-Multipoint Configuration

The point-to-multipoint configuration (Figure 1-5) connects the main LAN network to multiple remote LAN networks.