

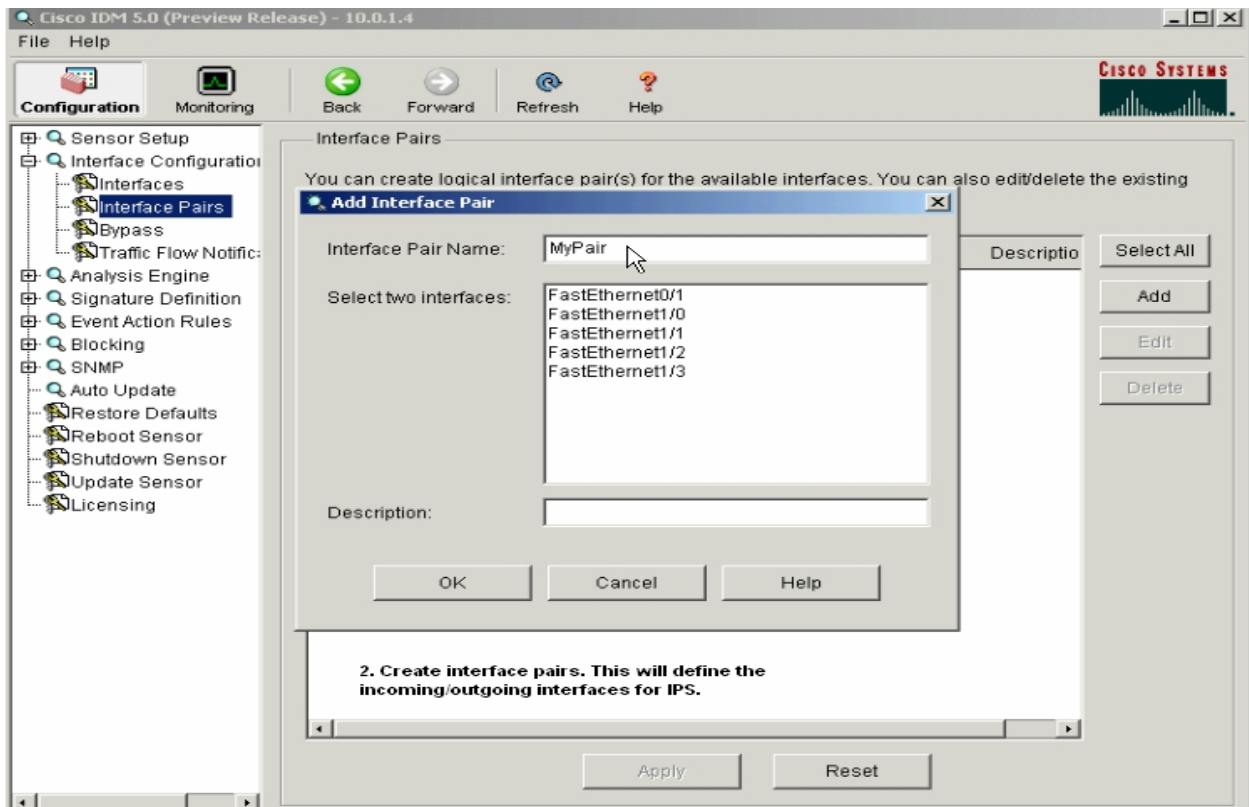
IPS BASIC CONFIGURATION:

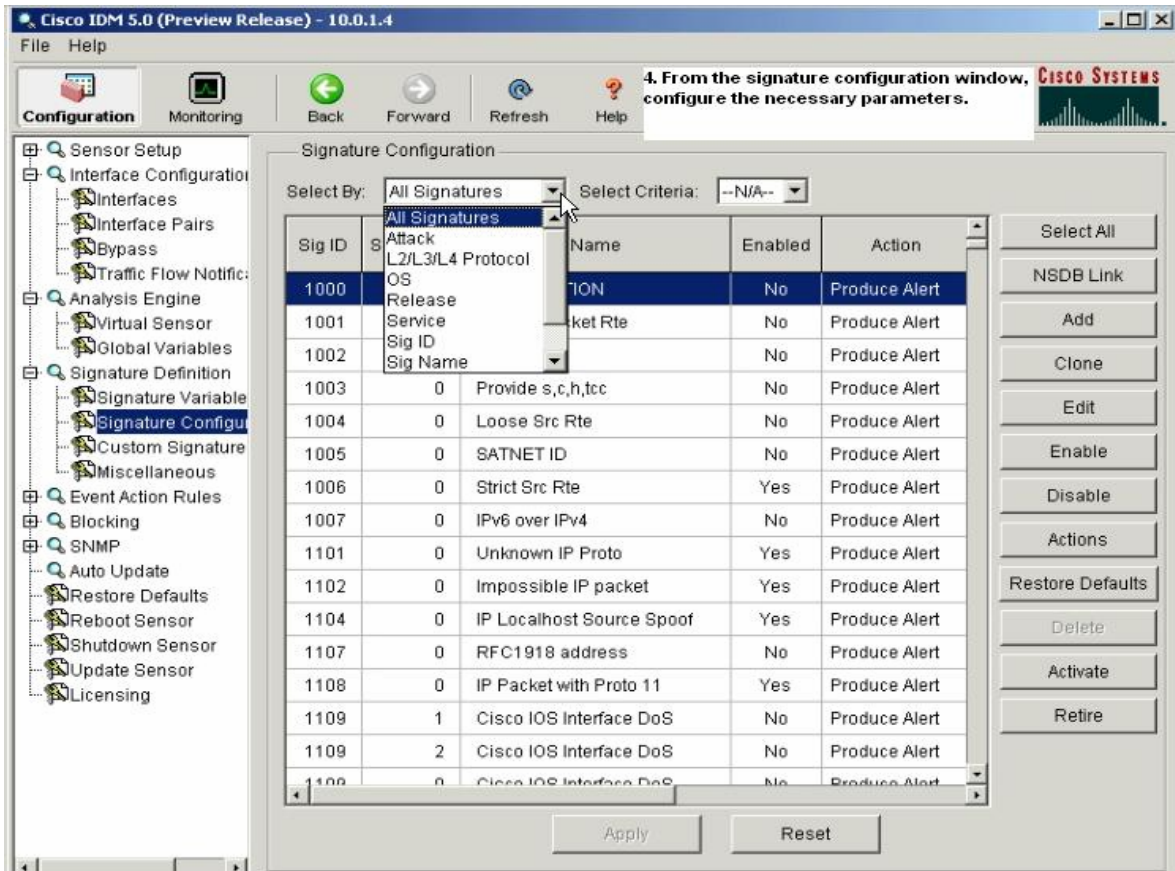
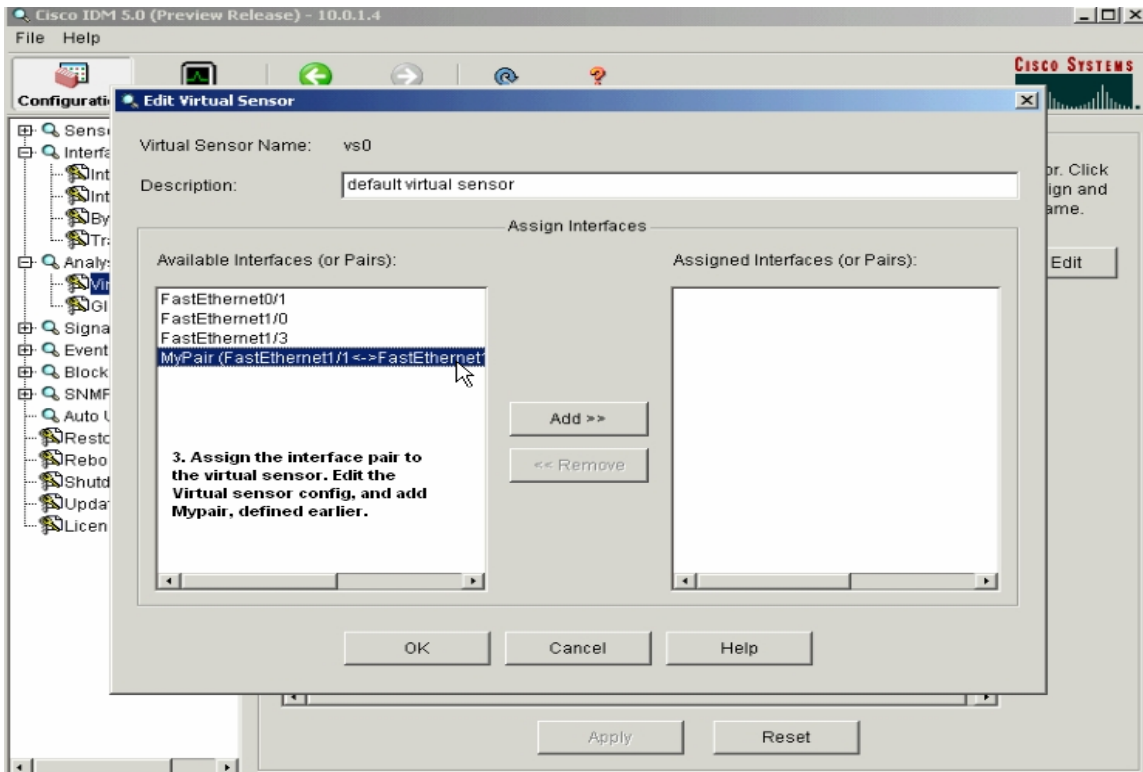
The following pages will show you how to complete all of the tasks necessary for configuring inline IPS.

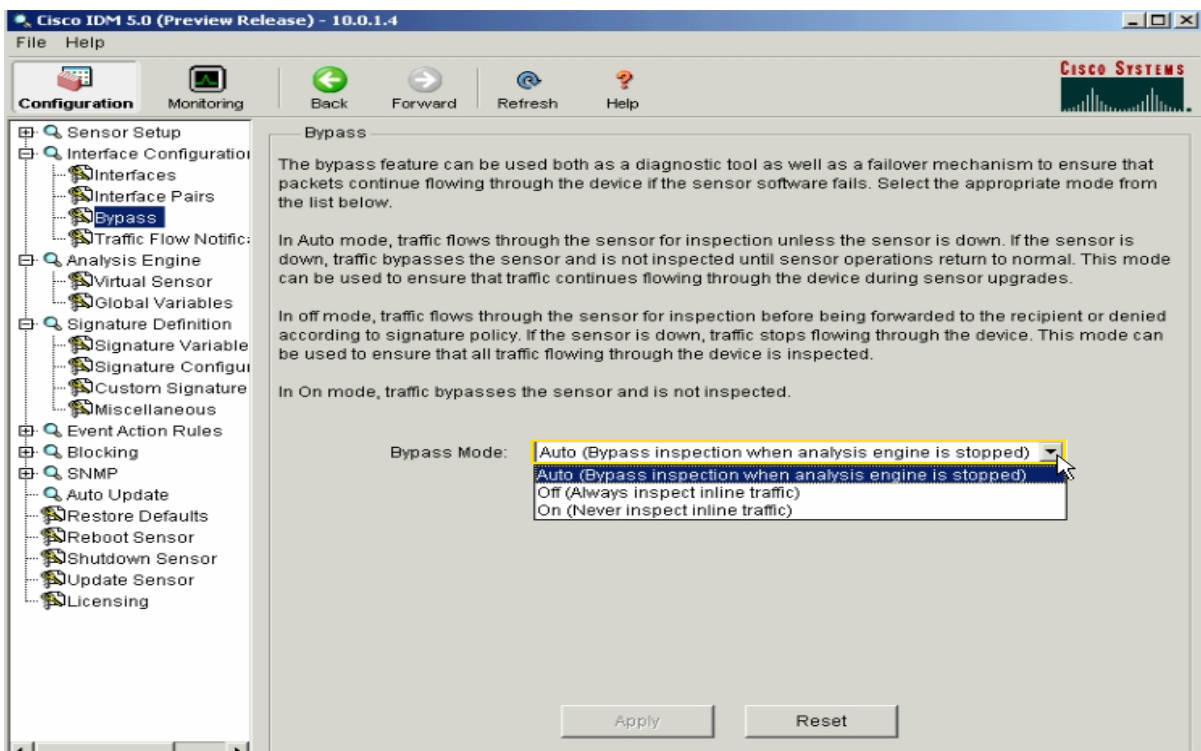
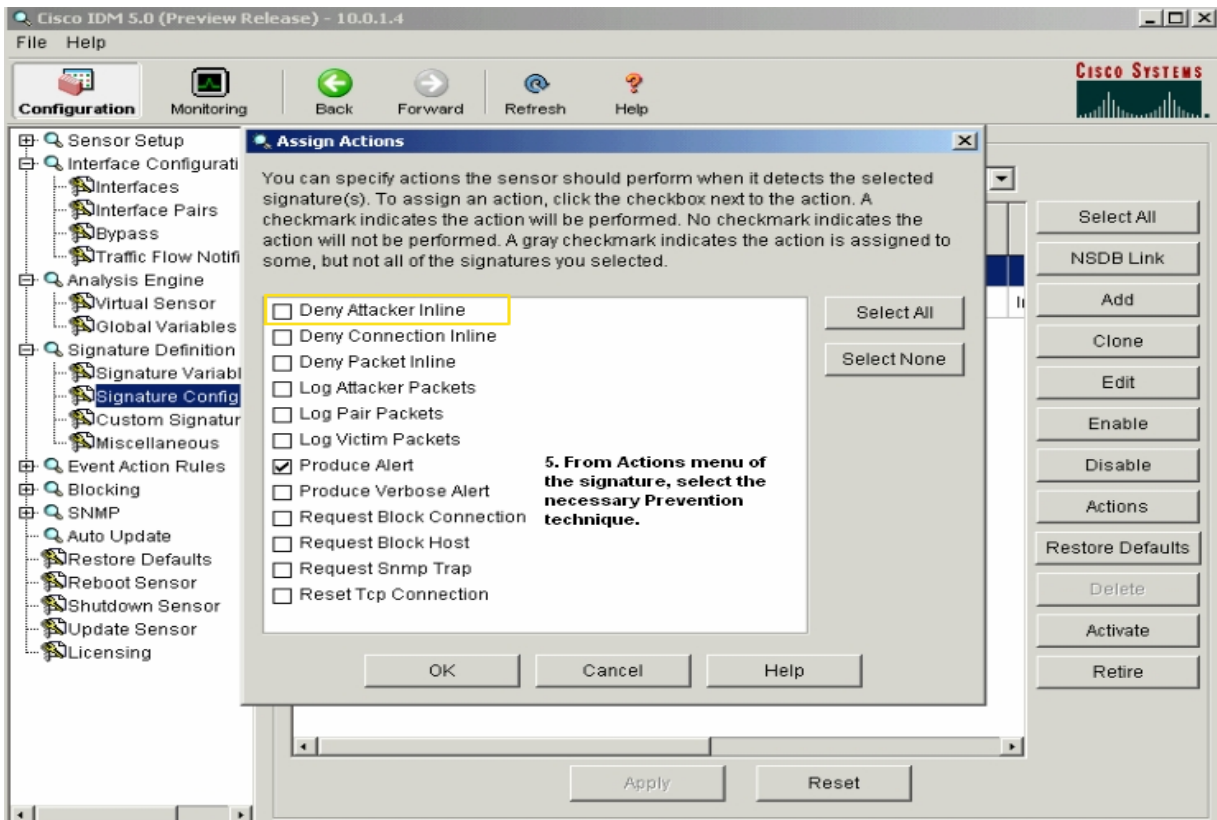
Configuring inline IPS consists of the tasks listed below:

- 1** Installing the sensor between two devices that have external network ports.
See the IPS Deployment guide for details.
- 2** Enabling the interfaces.
- 3** Creating an interface pair.
- 4** Assigning the interfaces to the virtual sensor.
- 5** Configuring the desired signatures with inline drop actions.

This module also shows you how to configure the software bypass mode. Software bypass mode can be used to enable traffic to continue to flow through inline pairs even when the sensor is not running. This function minimizes dataflow interruptions during reconfiguration, service pack installation, or software failure.







BASIC CONFIGURATIONS DONE !!!!

IPS READY TO DO ITS FUNCTIONALITY !!!!